

Premier 90 Two-Stage PSC Furnace

FLEXIBILITY

- Dual Certified venting (1 or 2 pipe), Direct Vent furnace
- 40" high with wider cabinets, for ease of installation
- Factory shipped for natural gas, with Propane Gas conversion kits available
- Four position - upflow/downflow/horizontal installation
- Vent pipe can be run horizontally or vertically
- Internal condensate drain system

SERVICE

- Self diagnostics
- Entire blower assembly mounted on rails

COMFORT

- Adjustable timed blower Off delay
- Thermal lined, one piece steel cabinet for noise reduction
- Insulated blower compartment
- 24 and 115 VAC humidifier terminal
- Electronic air cleaner terminal

EFFICIENCY

- 92.1% AFUE efficiency range
- Two stage gas valve operation
- Two stage integrated control
- Multispeed, prelubricated PSC blower motors
- Induced draft blower
- In-shot burners

QUALITY

- RPJ III Stainless steel heat exchanger
- Stainless steel secondary heat exchanger
- High temperature limit control prevents overheating
- Direct ignition with Silicon Nitride ignition
- Flame roll-out sensors standard
- External filter rack with permanent filters
- Solid doors
- 5 year limited parts warranty
- 7 year No Hassle Replacement limited warranty

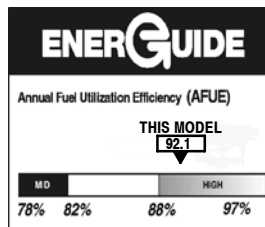


Illustrations and photographs are only representative. Some product models may vary.

⚠ WARNING

This furnace is not designed for use in mobile homes, trailers, or recreational vehicles. Such use could result in property damage and/or death.

**NO
hassle**
REPLACEMENT WARRANTY
see warranty certificate for details



UPFLOW/DOWNFLOW/HORIZONTAL (NATURAL GAS)					
Model Number	Heat Exchangers *	Dimensions H x W x D (In.)	Input (MBTUH)	Efficiency AFUE	Cooling Capacity @ .5 in wc
H9MPT050F12C	Lifetime	40 x 19 ¹ / ₈ x 29	50	92.1	1.5 - 3.0 TON
H9MPT075F14C	Lifetime	40 x 19 ¹ / ₈ x 29	75	92.1	1.5 - 3.5 TON
H9MPT100J16C	Lifetime	40 x 22 ³ / ₄ x 29	100	92.1	2.5 - 4.0 TON
H9MPT125L20C	Lifetime	40 x 24 ¹ / ₂ x 29	125	92.1	3.5 - 5.0 TON

* LIMITED LIFETIME WARRANTY

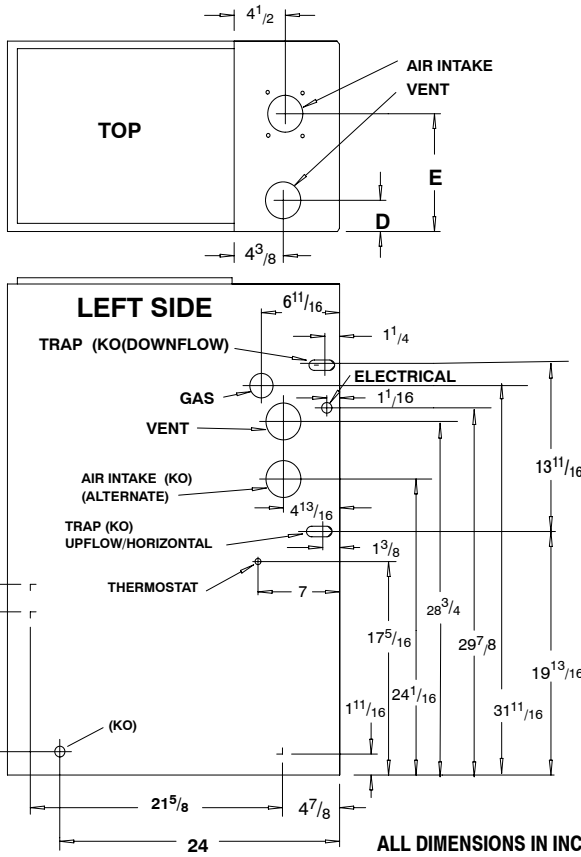
FURNACE SPECIFICATIONS

Model Number	*9MPT050F12	*9MPT075F14	*9MPT100J16	*9MPT125L20
INPUT HIGH FIRE (BTUH) LOW FIRE (BTUH)	50,000 35,000	75,000 53,000	100,000 70,000	125,000 87,500
HTG. CAP. HIGH FIRE (BTUH) LOW FIRE (BTUH)	46,000 32,000	70,000 49,000	93,000 65,000	117,000 82,000
AFUE % (ICS)	92.1	92.1	92.1	92.1
TEMP. RISE RANGE High Fire (°F/°C) Low Fire (°F/°C)	35-65/19-46 25-55/14-30	40-70/22-39 30-60/17-33	40-70/22-39 30-60/17-33	40-70/22-39 30-60/17-33
VENT SIZE ^	2" - 3" OD	2" - 3" OD	3" OD	3" OD
VOLTS/HZ/PH	115/1/60	115/1/60	115/1/60	115/1/60
MIN./MAX. VOLTAGE	104/127	104/127	104/127	104/127
RATING PLATE AMPS	11.8	11.8	11.8	14.0
TRANSFORMER (V.A.)	40	40	40	40
GAS PIPE SIZE (IN.)	1/2	1/2	1/2	1/2
COOLING CAP. (TONS)	3.0	3.5	4.0	5.0
FILTER SIZE (IN.)	16X25X1(1)	16X25X1(1)	16X25X1(1)	16X25X1(2)
HIGH ALTITUDE PRESSURE SWITCH	1013165	1013165	1013165	1013157
DIMENSIONS (in.) WIDTH X DEPTH X HEIGHT	19 ¹ / ₈ x 29 x 40	19 ¹ / ₈ x 29 x 40	22 ³ / ₄ x 29 x 40	24 ¹ / ₂ x 29 x 40

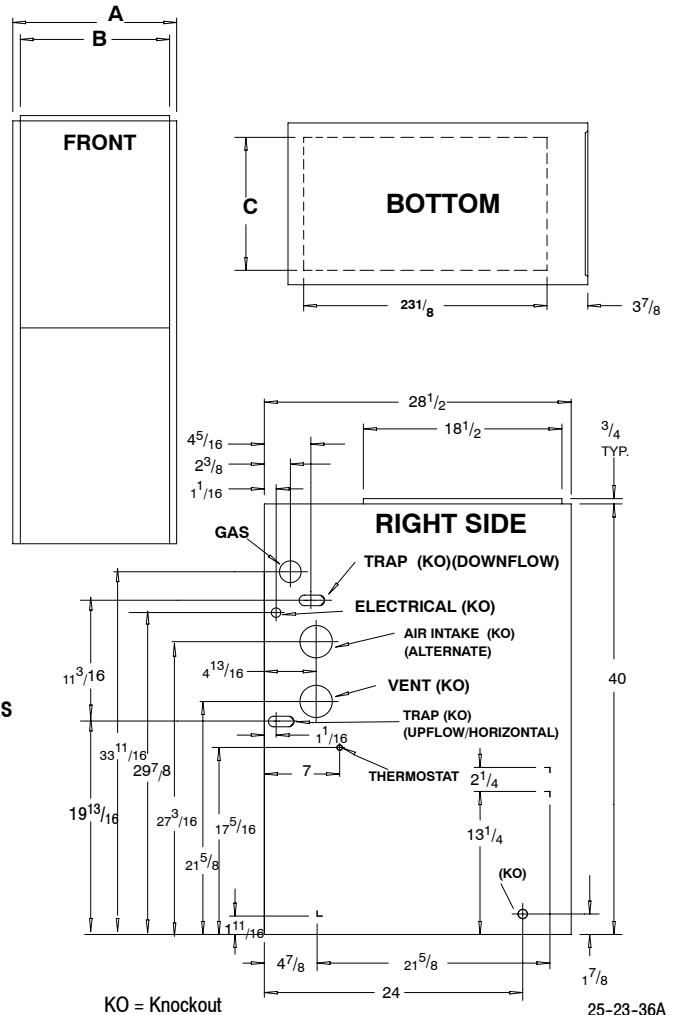
^ Vent size may vary depending on length, number of elbows, standard vent or direct vent. See Installation Instructions.

* Denotes Brand (C, H, T)

DIMENSIONS



Cabinet to Combustible Clearances						
TOP	BOT.	RH	LH	BACK	FRNT	FLUE
1"	0"	0"	0"	0"	3"	0"



Unit Capacity	Cabinet		Bottom	Top	
	A	B	C	D	E
*9MPT050F12C	19 ¹ / ₈	17 ⁵ / ₈	14 ³ / ₄	2 ¹ / ₂	9 ¹ / ₂
*9MPT075F14C	19 ¹ / ₈	17 ⁵ / ₈	14 ³ / ₄	2 ¹ / ₂	9 ¹ / ₂
*9MPT100J16C	22 ³ / ₄	21 ¹ / ₄	18 ³ / ₄	2 ⁵ / ₈	11 ³ / ₈
*9MPT125L20C	24 ¹ / ₂	23	23	2 ¹ / ₄	12 ¹ / ₄

* Denotes Brand (C, H, T)

Specifications subject to change without notice.

BLOWER PERFORMANCE

Model Number	*9MPT050F12 (1)	*9MPT075F14 (1)	*9MPT100J16 (1)	*9MPT125L20 (2)
BLOWER SIZE INCHES (DIA. x WIDTH)	11-8	11-8	11-10	11 -10
MOTOR H.P. (TYPE)	1/2 PSC	1/2 PSC	1/2 PSC	3/4 PSC
MOTOR SPEEDS	4	4	4	4

AIRFLOW DATA

.10 ESP in wc	LOW	826	695	823	1720
	MEDIUM LOW	1083	1025	1109	1910
	MEDIUM HIGH	1301	1455	1527	2127
	HIGH	1408	1724	1850	2315
.20 ESP in wc	LOW	804	674	795	1686
	MEDIUM LOW	1050	1001	1087	1881
	MEDIUM HIGH	1242	1410	1482	2087
	HIGH	1347	1662	1791	2268
.30 ESP in wc	LOW	770	653	747	1644
	MEDIUM LOW	1028	951	1056	1833
	MEDIUM HIGH	1195	1365	1426	2024
	HIGH	1295	1601	1720	2201
.40 ESP in wc	LOW	735	631	677	1600
	MEDIUM LOW	985	921	1016	1777
	MEDIUM HIGH	1153	1309	1382	1961
	HIGH	1237	1530	1648	2131
.50 ESP in wc	LOW	698	609	617	1533
	MEDIUM LOW	952	891	970	1720
	MEDIUM HIGH	1093	1252	1317	1891
	HIGH	1183	1460	1575	2029
.60 ESP in wc	LOW	657	569	544	1494
	MEDIUM LOW	909	845	854	1647
	MEDIUM HIGH	1040	1187	1245	1804
	HIGH	1118	1380	1485	1948
.70 ESP in wc	LOW	---	529	---	1413
	MEDIUM LOW	863	799	652	1572
	MEDIUM HIGH	935	1122	1154	1708
	HIGH	1053	1300	1401	1820
.80 ESP in wc	LOW	---	490	---	1306
	MEDIUM LOW	812	730	652	1470
	MEDIUM HIGH	865	1030	1043	1604
	HIGH	976	1190	1284	1730
.90 ESP in wc	LOW	---	---	---	---
	MEDIUM LOW	---	680	---	1349
	MEDIUM HIGH	802	950	905	1484
	HIGH	887	1080	1161	1614
1.00 ESP in wc	LOW	---	---	---	---
	MEDIUM LOW	---	---	---	---
	MEDIUM HIGH	720	831	739	1328
	HIGH	787	969	1028	1430

* Denotes Brand (C, H, T)

NOTE: (1) Data based on Bottom Only or One Side return.
 (2) Data based on Both Sides or Bottom plus One Side

MAX CFM's	
Filter Size	CFM
14" X 25"	1400
16" X 25"	1600
20" X 25"	2000
24" X 25"	2500
Max CFM based on 600 FPM	

CFM - Cubic Feet per Minute airflow.

Filter required for each return-air inlet. Airflow performance includes 1" washable (600 FPM max) filter media.

ACCESSORIES

Model Number	Description	Used With Models
NAHA002NG (1172961 [^])	Gas Conversion Kits (2-Stage) - Propane to natural gas conversion kit. Allows field conversion to natural gas.	*9MPT
NAHA002LP (1172959 [^])	Gas Conversion Kits (2-Stage) - Natural gas to Propane conversion Kit. Allows field conversion to Propane gas.	*9MPT
NAHA004WK	Twinning kit. Allows operation of two identical-size model furnaces.	ALL *9MPT FURNACES
NAHA001FF	Filter Kits - External filter frame. 16" x 25"	Side Return (All Furnaces) Bottom Return (All "F" 19 ¹ / ₈ " Furnaces under 1600 CFM)
NAHA001FP	External filter frame. 16" x 25" (Bulk Pack Kit - Qty 10)	
NAHA002FF	Filter Kits - Bottom return filter frame kit 20" x 25"	(All "J" 22 ³ / ₄ " Furnaces)
NAHA002FP	Bottom return filter frame kit 20" x 25" (Bulk Pack Kit - Qty 10)	
NAHA001TK	Duct Standoff Filter Kit. To adapt 20" x 25" filter for single side return.	Side Return (All single return applications with 1600 CFM or greater) Bottom Return (All "F" 19 ¹ / ₈ " Furnaces under 1600 CFM)
NAHA001NK 612833 [^]	Condensate neutralizer kit - for condensing gas furnaces	All *9MPT Furnaces If Required
NAHL050VBB	Blower Upgrade Kit for C Series furnace only - Variable speed blower upgrade conversion to a two stage cooling compatible variable speed motor (consists of blower motor and electronics for two stage furnaces ONLY)	*9MPT050
NAHL075VBB		*9MPT075
NAHL100VBB		*9MPT100
NAHL125VBB		*9MPT125
NAHH002SB	Combustible Floor Subbase - Furnace ONLY: All 19 ¹ / ₄ " wide furnace models	*9MPT050/075
NAHH003SB	Combustible Floor Subbase - Furnace ONLY: All 22 ³ / ₄ " wide furnace models	*9MPT100
NAHH010SB	Combustible Floor Subbase - Furnace ONLY: All 24 ¹ / ₂ " wide furnace models	*9MPT125
NAHH005SB	Subbase - Furnace w/19 ¹ / ₄ " cased coil	*9MPT050/075 Counterflow furnace w/19 ¹ / ₄ " cased coil
NAHH006SB	Subbase - Furnace w/22 ³ / ₄ " cased coil	*9MPT100 Counterflow furnace w/22 ³ / ₄ " cased coil
NAHH009SB	Subbase - Furnace w/24 ¹ / ₂ " cased coil	*9MPT125
1013165 [^]	High Pressure Switch Kit	*9MPT050, 075 & 100
1013157 [^]	High Pressure Switch Kit	*9MPT125
NAHA001CV 1011129 [^]	3" Concentric vent kit - allows single wall penetration for 2 pipe direct vent applications (90+).	*9MPT100/125
NAHA002CV	2" Concentric vent kit allows - single wall penetration for 2 pipe direct vent applications (90+).	*9MPT050/075
NAHA001CA	Coil Adapter for Downflow Furnaces	All Downflow Models
NAHA002WL	To replace Warning Labels, Operating Instructions & Wiring Labels on Blower Door when needed	*9MPT

[^] Must be ordered from Service Parts

* Denotes Brand (C, H, T)

MODEL NUMBER IDENTIFICATION GUIDE

*	9	M P	T	0 7 5	F	1 4	C	#
Brand Identifier * = Brand Specific								Engineering Rev. Denotes minor change
Model Efficiency 8 = Non-Condensing, 80+% Gas Furnace 9 = Condensing, 90+% Gas Furnace								Marketing Digit Denotes major change
Installation Configuration UP = Upflow DN = Downflow UH = Upflow/Horizontal HZ = Horizontal DH = Downflow/Horizontal MP = Multiposition, Up/Down/Horizontal								Cooling Airflow 08 = 800 CFM 12 = 1200 CFM 14 = 1400 CFM 16 = 1600 CFM 20 = 2000 CFM
Major Design Feature 1 = One (Single) Pipe N = Single Stage 2 = Two Pipe P = PVC Vent D = 1 or 2 Pipe T = Two Stage L = Low NOx V = Variable Speed								Cabinet Width B = 15.5" Wide F = 19.1" Wide J = 22.8" Wide L = 24.5" Wide
								Input (Nominal MBTUH)

* Denotes Brand (C, H, T)

International Comfort Products, LLC
Lewisburg, TN 37091 U.S.A.
www.GoArcoaire.com

Specifications subject to change without notice.