

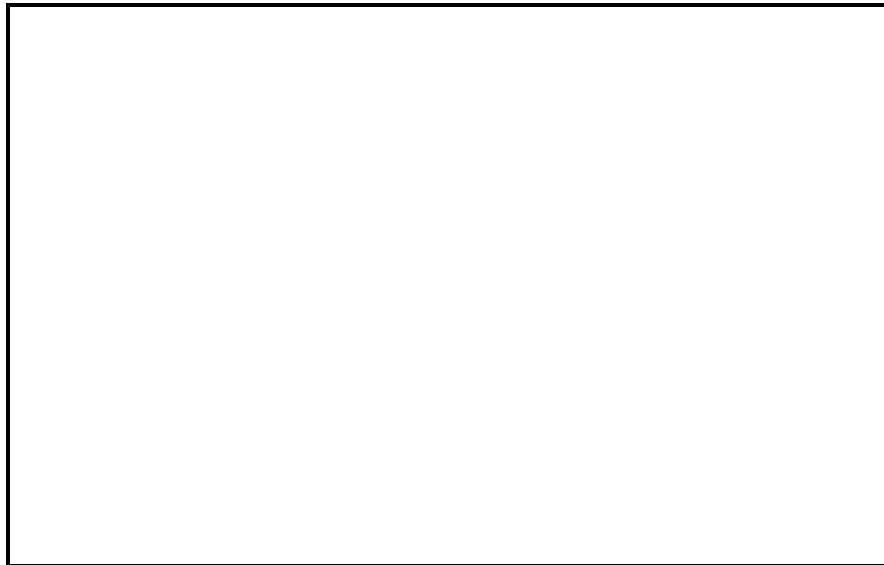
38AUZ/D
60Hz
Sizes 07 – 25
Air-Cooled Condensing Units
with Puron® (R-410A) Refrigerant



Turn to the Experts.™

Submittal Data

- **PERFORMANCE DATA**
- **CERTIFIED DIMENSION PRINTS**



Job Data: _____ Location: _____

Buyer: _____ Buyer P.O.#: _____ Carrier: _____

Unit Number: _____ Model Number: _____

Unit Designation: _____

Performance Data Certified By: _____



Certified to ISO 9001:2000



DESCRIPTION

38AU units are air-cooled condensing units which are easily connected by refrigerant lines and low voltage control wiring to matching Carrier packaged air-handling units or other suitable evaporator units to provide customized packages covering a wide range of cooling requirements. Powerful, direct-drive axial-flow fans are mounted horizontally with vertical coils, resulting in a desirable low silhouette. They are ideal for new construction or renovation where quality and performance are required.

STANDARD FEATURES

- Puron (R-410A) HFC refrigerant
- Single Circuit (38AUZ) are available in 07 to 25 models.
- Dual Circuit (38AUD) are available in 12 to 25 models.
- Novation™ condenser coil available on size 07 - 16 units.
- Round Copper Tube/Aluminum Plate Fin (RTPF) condenser coil available on size 25 units.
- Cooling operating range up to 125°F (52°C) and down to 35°F (2°C)
- Brass suction and liquid line service valves
- Fully Hermetic Scroll compressor with crankcase heater
- New terminal board facilitating simple safety circuit troubleshooting and simplified control box arrangement. 24-volt 75va control system.
- High and low pressure switches.
- UL and UL, Canada apply to standard units; 575-volt units UL, Canada only.
- Comfort Alert™ Diagnostic Board:
 - LED Go-No-Go and fault code
 - Built in time guard anti short cycle
 - Phase protection
 - Fault code retention logic
 - Low voltage compressor contactor protection
- Full perimeter base rails with built-in rigging adapters and fork truck slots.
- Pre-painted exterior panels and primer-coated interior panels tested to 500 hours salt spray protection.
- Direct drive permanently lubricated condenser fan motors.
- All units factory run tested.
- Compressors mounted on independent vibration isolators
- Standard parts warranty,
 - 5-year compressor parts
 - 3-year Novation condenser coil parts
 - 1-year RTPF condenser coil parts
 - 1-year parts

PERFORMANCE DATA

Cooling Capacity: _____ Btuh Compressor Power Input: _____ kW
Ambient Air Temperature: _____ °F Compressor Fan Power Input: _____ kW
Saturated Suction Temperature: _____ °F Compressor Unloading Steps: _____ %
Saturated Condensing Temperature: _____ °F Minimum Ambient Air Temperature
Standard Unit: _____ °F

ELECTRICAL DATA

Power Supply to Unit _____ Volts _____ Phase _____ Hz
Minimum Circuit Amps _____ Maximum Overcurrent Protection _____

38AU

SUBMITTAL DATA

Job Name _____
Architect _____
Engineer _____
Contractor _____
Unit Designation _____

OPTIONS AND ACCESSORIES

FACTORY-INSTALLED OPTIONS (FIOPs)

- E-Coated Condenser Coil - required for use in any non standard (Non Corrosive) environment.
- Additional Pre Coat on size 25 units
- Motormaster[®] Low ambient head pressure controller, down to -20°F (-29°C)
- Non-fused disconnect
- Powered 115-volt convenience outlet
- Non-powered 115-volt convenience outlet
- Condenser hail guard - louvered style

OPTIONAL WARRANTIES

- Complete Unit Parts only up to 5 years
 - Complete Unit Parts and Labor up to 5 years
- Many other optional warranties are available.
See the *Commercial Start-Up and Optional Extended Warranty Price* price pages for further information.

FIELD INSTALLED ACCESSORIES

- Motormaster[®] Low ambient head pressure controller, down to -20°F (-29°C)
- Winter start kit, down to 25°F (-4°C)
- Suction Line Accumulator
- Liquid Line Solenoid Valve
- Solenoid Coil
- Filter Drier
- Sight Glass
- Condenser coil hail guard - louvered style
- Wired Grille - Condenser Coil guard
- Thermostats and thermostat accessories

CERTIFIED DIMENSION 38AU*07, 08, 12, 14

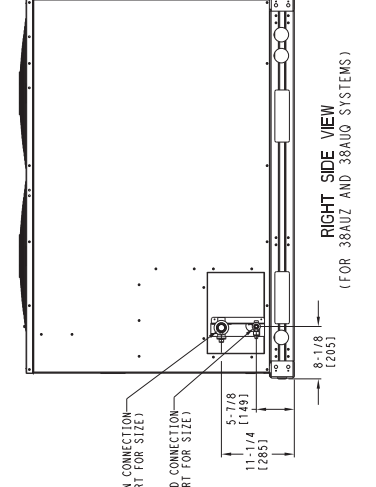
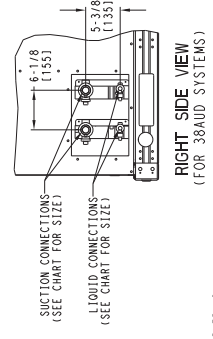
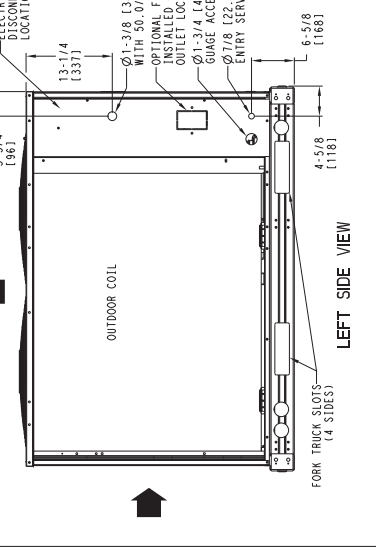
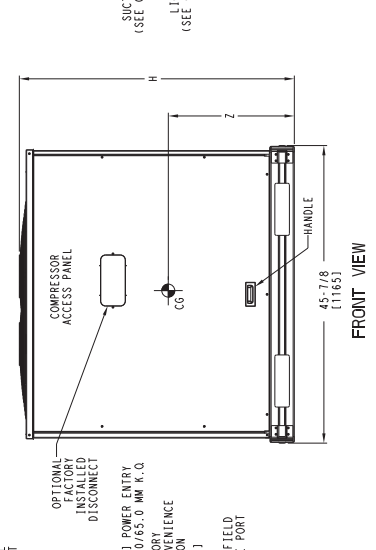
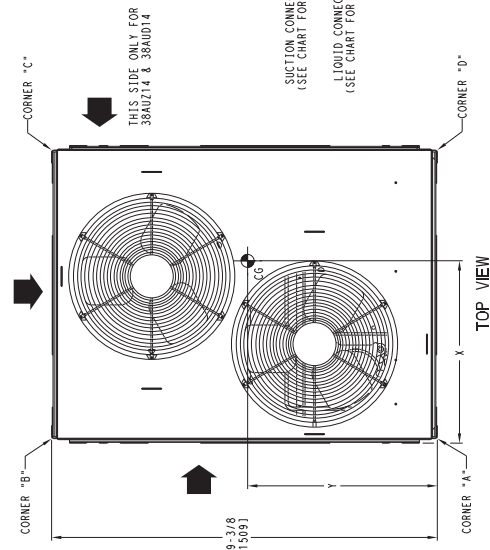
UNIT	ELECTRICAL CHARACTERISTICS		STD. UNIT WT.		CORNER A		CORNER B		CORNER C		CORNER D		CENTER OF GRAVITY			UNIT HEIGHT									
	LBS.	KG.	LBS.	KG.	LBS.	KG.	LBS.	KG.	LBS.	KG.	LBS.	KG.	X	Y	Z	H									
38AUZ-07	2087	943	128	58	68	31	62	28	70	32	21	1533	41	19	1482	61	13	1330	21	42	318	11076	01		
38AUZ-08	2087	943	138	63	72	33	65	29	78	35	19	1482	61	23	1584	21	13	1330	21	42	318	11076	01		
38AUZ-12	2087	943	160	73	85	39	78	35	90	41	23	1584	61	20	1508	01	15	1381	01	50	318	11218	21		
38AUZ-14	2087	943	196	89	111	50	72	38	123	56	23	1584	61	15	1381	01	15	1381	01	50	318	11218	21		
38AUD-07	2087	943	128	58	68	31	62	28	70	32	21	1533	41	19	1482	61	13	1330	21	42	318	11076	01		
38AUD-08	2087	943	138	63	72	33	65	29	78	35	19	1482	61	23	1584	21	13	1330	21	42	318	11076	01		
38AUD-12	2087	943	160	73	85	39	78	35	90	41	23	1584	61	20	1508	01	15	1381	01	50	318	11218	21		
38AUD-14	2087	943	196	89	111	50	72	38	123	56	23	1584	61	15	1381	01	15	1381	01	50	318	11218	21		
38AUO-07	2087	943	140	64	130	59	85	39	130	59	20	1508	01	24	1609	61	13	1330	21	42	318	11076	01		
38AUO-08	2087	943	160	73	144	65	69	31	114	52	97	44	23	1584	21	26	1609	61	13	1330	21	42	318	11076	01
38AUO-12	2087	943	196	89	141	64	94	43	141	64	21	1533	41	24	1609	61	15	1381	01	50	318	11218	21		

P.O. BOX 4898
 UNITED TECHNOLOGIES SRAKUSE, NY 13221
 CARRIER

THIS DOCUMENT IS THE PROPERTY OF CARRIER CORPORATION AND IS DELIVERED UPON THE EXPRESS CONDITION THAT THE USER SHALL RETURN IT TO CARRIER CORPORATION IN WRITTEN FORM. THIS DOCUMENT DOES NOT CONSTITUTE PART PERFORMANCE OR ACCEPTANCE OF CONTRACT.

- NOTES:
- MINIMUM CLEARANCE (LOCAL CODES OR JURISDICTION MAY PREVAIL): TO COMBUSTIBLE SURFACES, 6 INCHES.
 - TO OUTDOOR COILS, FROM PROPERLY INSTALLED, 6 INCHES (8141).
 - ONE SIDE, 12 INCHES (8005) THE OTHER, THE SIDE GETTING THE GREATER CLEARANCE IS OPTIONAL.
 - OVERHEAD: 60 INCHES (1524), TO ASSURE PROPER OUTDOOR FAN OPERATION.
 - BETWEEN UNITS: CONTROL BOX SIDE, 42 INCHES (1067) PER NEC.
 - BETWEEN UNIT AND UNGROUNDED SURFACES: CONTROL BOX SIDE, 36 INCHES (914) PER NEC.
 - BETWEEN UNITS AND BLOCK OR CONCRETE WALLS AND OTHER REMOVED SURFACES: 6 INCHES (152.4) PER NEC.
 - WITH EXCEPTION OF THE CLEARANCE FOR THE OUTDOOR COIL AS STATED IN NOTE 1B, A REMOVABLE FENCE OR BARRICADE REQUIRES NO CLEARANCE.
 - UNITS ARE TO BE INSTALLED ON LEVEL FLOORS MADE OF CONCRETE OR CLASS "A" OR "B" ON "C" ROOF COVERING MATERIAL.

UNIT	SUCTION	LIQUID
38AUZ07	1-1/8 (28.6)	3/8 (9.5)
38AUZ08	1-1/8 (28.6)	1/2 (12.7)
38AUZ12	1-3/8 (34.9)	1/2 (12.7)
38AUZ14	1-3/8 (34.9)	5/8 (15.9)
38AUD12	1-1/8 (28.6)	3/8 (9.5)
38AUD14	1-3/8 (34.9)	1/2 (12.7)
38AUO07	1-1/8 (28.6)	3/8 (9.5)
38AUO08	1-1/8 (28.6)	1/2 (12.7)
38AUO12	1-3/8 (34.9)	1/2 (12.7)



SERVICE VALVE CONNECTIONS

UNIT SUCTION LIQUID

CG

↑ DIRECTION OF AIR FLOW

DIMENSIONS IN () ARE IN MM

DATE	02/17/09	SUPERSEDES	12/30/08	38AUZ 07-14; 38AUZ 12-14; 38AUO 07-12	38AU00349	REV	3.0
------	----------	------------	----------	---------------------------------------	-----------	-----	-----

CERTIFIED DIMENSION 38AU*16

UNIT	ELECTRICAL CHARACTERISTICS		STD. UNIT WT.		CORNER A		CORNER B		CORNER C		CORNER D		CENTER OF GRAVITY			UNIT HEIGHT H				
	LBS.	KG.	LBS.	KG.	LBS.	KG.	LBS.	KG.	LBS.	KG.	LBS.	KG.	X	Y	Z					
38AUZ16	208/230-3-60-460-3-60	575-3-60	633	288	220	100	134	61	135	61.5	144	65.5	38	(965.2)	19-1/2	(495.3)	15-1/8	(383.8)	30-3/8	(1279.2)
38AUD16	208/230-3-60-460-3-60	575-3-60	633	288	220	100	134	61	135	61.5	144	65.5	38	(965.2)	19-1/2	(495.3)	15-1/8	(383.8)	30-3/8	(1279.2)

NOTES:

- MINIMUM CLEARANCE (LOCAL CODES OR JURISDICTION MAY PREVAIL):
 - A. BOTTOM OF CONDENSING UNIT TO COMBUSTIBLE SURFACES: 6 INCHES.
 - B. TOP OF CONDENSING UNIT TO COMBUSTIBLE SURFACES: 12 INCHES.
 - C. ONE SIDE: 12 INCHES; THE OTHER: THE SIDE GETTING THE GREATER CLEARANCE IS OPTIONAL.
 - D. OVERHEAD: 60 INCHES, TO ASSURE PROPER OUTDOOR FAN OPERATION.
 - E. BETWEEN UNITS: CONTROL BOX, SIDE: 42 INCHES PER NEC. BETWEEN UNITS AND UNGROUNDED SURFACES: CONTROL BOX, SIDE: 36 INCHES PER NEC.
 - F. BETWEEN UNIT AND BLOCK OR CONCRETE WALLS AND OTHER SURFACES: 12 INCHES PER NEC.
- WITH EXCEPTION OF THE CLEARANCE FOR THE OUTDOOR COIL AS STATED IN NOTE 1B, A REMOVABLE FENCE OR BARRICADE REQUIRES NO CLEARANCE.
- UNITS MAY BE INSTALLED ON COMBUSTIBLE FLOORS MADE FROM WOOD OR CLASS A, B OR C ROOF COVERING MATERIAL.

SERVICE VALVE CONNECTIONS		
UNIT	SUCTION	LIQUID
38AUZ16	1-3/8 [34.9]	5/8 [12.7]
38AUD16	1-3/8 [34.9]	1/2 [12.7]

CG CENTER OF GRAVITY

DIRECTION OF AIR FLOW

DIMENSIONS IN () ARE IN MM

TOP VIEW

FRONT VIEW

LEFT SIDE VIEW

RIGHT SIDE VIEW

DATE 11/17/09	SUPERSEDES 01/06/09	38AUZ AND 38AUD 16 CONDENSING UNIT	REV C
------------------	------------------------	---------------------------------------	----------

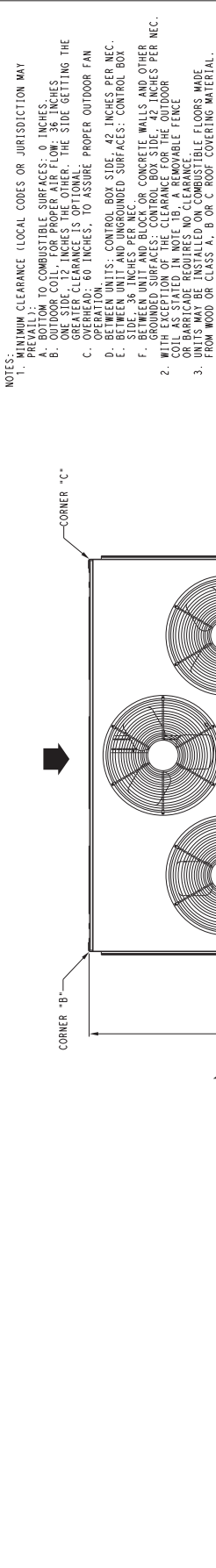


C08591

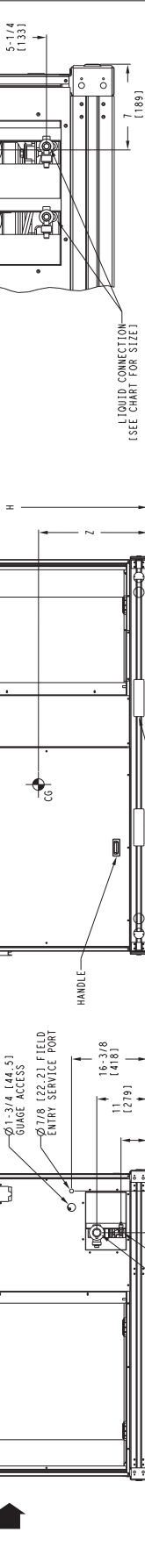
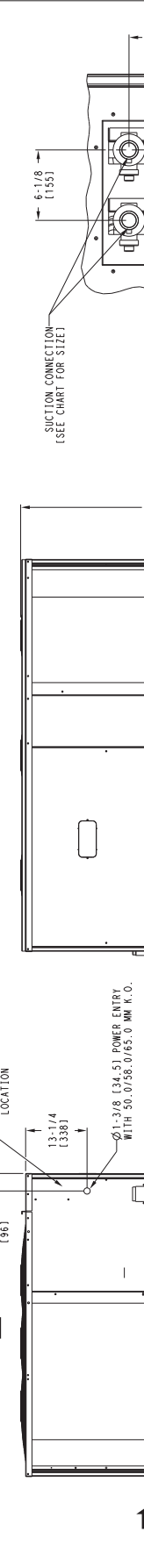
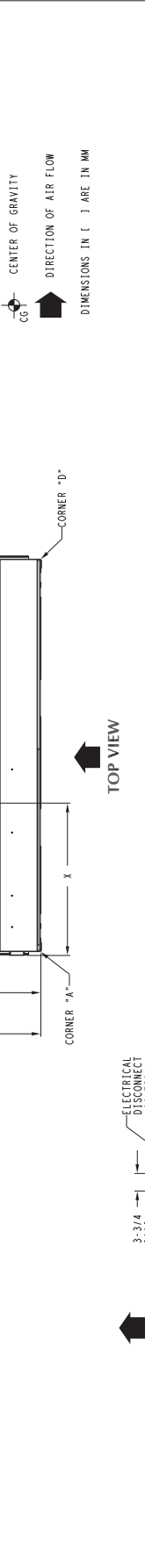
CERTIFIED DIMENSION 38AU*25

UNIT	ELECTRICAL CHARACTERISTICS	STD. UNIT WT. LBS.	CORNER A			CORNER B			CORNER C			CORNER D			CENTER OF GRAVITY			UNIT HEIGHT H	SUBMISSION OF THESE DRAWINGS OR DOCUMENTS DOES NOT CONSTITUTE AN ACCEPTANCE OF CONTRACT	
			LBS.	KG.	LBS.	KG.	LBS.	KG.	LBS.	KG.	LBS.	KG.	X	Y	Z	UNIT WEIGHT LBS.	KG.			INCHES
38AUZ25	208/230-3-60-460-3-60-575-3-60	900	409	475	216	58	26.5	242	110	125	57	37-1/4	1946.1	23-1/4	1590.5	15-1/8	383.8	50-3/8	1279.2	
38AUD25	208/230-3-60-460-3-60-575-3-60	900	409	475	216	58	26.5	242	110	125	57	37-1/4	1946.1	23-1/4	1590.5	15-1/8	383.8	50-3/8	1279.2	

P.O. Box 4889
UNITED LOGISTICS INCORPORATED
14201
CARRIAGE



SERVICE VALVE CONNECTIONS	
UNIT	LIQUID
38AUZ25	1-5/8 (41.3) 5/8 (15.9)
38AUD25	1-3/8 (34.9) 1/2 (12.7)



DATE	SUPERCESSES	REV
03/16/09	-	2.0

38AUZ AND 38AUD 25
CONDENSING UNIT

38AU500370

C08592