

Ducted Style Heat Pump Ductless System



Indoor Model: RAV-SP181BT-UL
Outdoor Model: RAV-SP180AT2-UL

turn to the experts™

Submittal Data

Job Data: _____ Location: _____

Buyer: _____ Buyer P.O. #: _____ Carrier #: _____

Unit Number: _____ Model Number: _____

Performance Data Certified By: _____ Date: _____



DUCTED UNIT STANDARD FEATURES

- Digital inverter compressor technology
- Built-in Condensate pump (21.7 in of lift from bottom of unit)
- System can operate in cooling-only mode with heating locked out
- 3 indoor unit fan speeds
- Power saving mode
- Quiet operation
- Low-ambient cooling down to 0°F*
- System diagnostics
- Rear or bottom return
- Outside Air Intake

* With wind baffles installed

CONTROL FEATURES

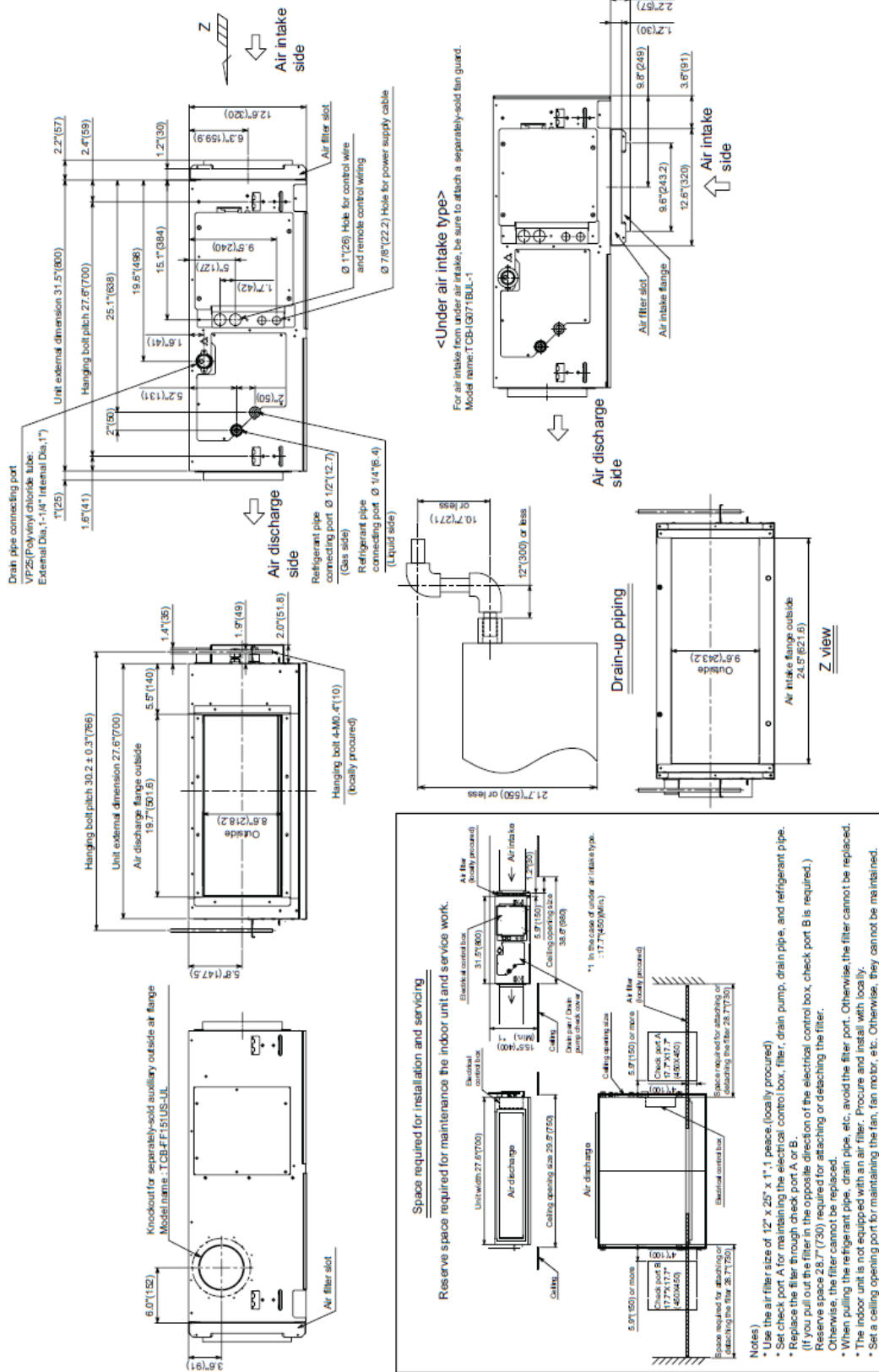
- Optional wireless remote control
- Optional wired remote control

(Unless otherwise indicated, data applies to both indoor and outdoor models)

SYSTEM SIZE	18
REFRIGERANT	R-410A
PERFORMANCE	
Rated Cooling Capacity (Btuh)	18,000
Cooling Range (Btuh)	9,600-19,200
SEER/EER	17.0/8.6
Rated Heating Capacity (Btuh)	20,000
Heating Range (Btuh)	11,000-22,500
HSPF	10.8
AIRFLOW (DRY)	
Indoor Airflow H / M / L (cfm)	459/406/341
Max Static Pressure (in. WG)	0.45
Sound Pressure - dBA	
Outdoor Sound Pressure (dBA)	48/49
Indoor Sound Pressure at different speeds (dBA)	36/33/30

ELECTRICAL	
System Voltage	208/230-1-60
Indoor Unit	Wired from Outdoor
Wires between Indoor and Outdoor	4
MCA	17
MOCP	30
CONTROLS	
Wireless Remote	Optional
Wired Control	Optional
REFRIGERANT LINES	
Total Piping Length (ft)	165
Vertical Lift (ft)	100
Suction Line Size (in)	1/2
Liquid Line Size (in)	1/4
AMBIENT OPERATING RANGE	
Cooling DB Min ~ Max (F)	23~115 (0 with wind baffle)
Heating DB Min ~ Max (F)	-4~59
UNIT WEIGHT - Gross/Net	
Indoor unit (lbs)	82/73
Outdoor unit (lbs)	105/98

Construction View: Indoor Unit RAV-SP181BTUL



Construction View: Outdoor Unit RAV-SP180AT2-UL

