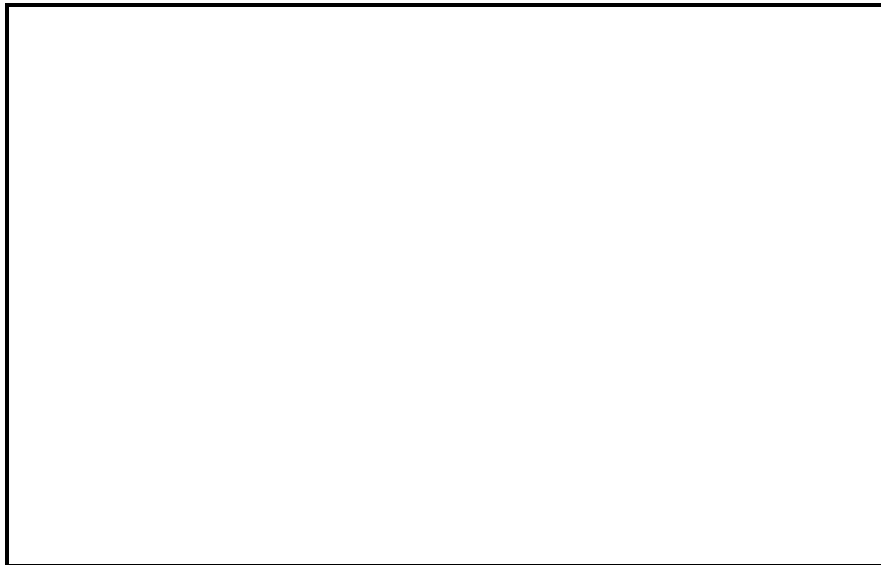


50KC WeatherMaker® Series
Single Package Rooftop, 14 SEER
Cooling Only with Field-Installed Electric Heat
Sizes 04 – 06 with Puron® (R-410A) Refrigerant



Submittal Data

- **PERFORMANCE DATA**
- **CERTIFIED DIMENSION PRINTS**
- **CERTIFIED ROOF CURB
DIMENSION PRINTS**
- **SERVICE OPTION DIMENSION
PRINTS**



Job Data: _____ Location: _____
 Buyer: _____ Buyer P.O.#: _____ Carrier: _____
 Unit Number: _____ Model Number: _____
 Unit Designation: _____
 Performance Data Certified By: _____



**Certified to
ISO 9001**



Use of the AHRI Certified TM Mark indicates a manufacturer's participation in the program. For verification of certification for individual products, go to www.ahridirectory.org.

DESCRIPTION

50KC units are single-packaged electric cooling only units that are pre-wired and pre-charged with Puron® (R-410A) HFC refrigerant. Electric heat is available as a field-installed accessory. The units are factory tested in the cooling mode.

50KC



STANDARD FEATURES

Base Unit

- Puron (R-410A) HFC refrigerant
- SEER's up to 14.1
- EER's up to 12.0
- Meets and exceeds ASHRAE 90.1 energy efficiency levels
- Rated in accordance with AHRI Standards 210/240
- Designed in accordance with Underwriters' Laboratories Std 1995
- Listed by UL & CUL-Canada
- Single-stage cooling capacity control
- Non-corrosive composite sloping design; side or center drain condensate pan. Meets ASHRAE Standard 62
- Standard cooling operating range from 40°F up to 115°F (4°C up to 46°C). Field installable accessory extends the minimum down to -20°F (-29°C)
- Field convertible from vertical to horizontal airflow for slab mounting — No special kits required
- Two-inch disposable return air filters
- Thru-the-bottom power entry capability
- Single point electric connections
- 24-volt control circuit protected with resettable circuit breaker
- Direct Drive - ECM Indoor fan motor is standard with optional belt drive systems
- Totally enclosed condenser motors with permanently lubricated bearings
- Low-pressure and high-pressure switches

- Full perimeter base rail with built-in rigging adapters and fork truck slots
- Central Terminal Board facilitating simple safety circuit troubleshooting and simplified control box arrangement

Cabinet

- Access panels with easy grip handles and NO-STRIP screw collar
- Pre-painted exterior panels and primer-coated interior panels tested to 500 hours salt spray protection
- Fully insulated cabinet
- Tool-less filter access door

Refrigerant System

- Acutrol™ refrigerant metering system
- Liquid line filter drier
- Scroll compressors with internal line-break overload protection
- Copper tube, aluminum fin coils with optional corrosion resistant coils. Corrosion resistant coils are not available for single phase (-3 voltage) models.
- Removable gauge line plugs for reading refrigerant pressure with unit panels in place

Standard Warranty

- 5-year electric heater parts (field-installed)
- 5-year compressor parts
- 1-year parts

PERFORMANCE DATA

Unit Operating Weight _____ lb

Curb Weight _____ lb

Cooling

Gross Total Capacity: _____ Btuh

at Condenser Air Temperature _____ °F

Gross Sensible Capacity: _____ Btuh

Compressor Power Input: _____ kW

Indoor Entering db _____ °F wb _____ °F

Airflow _____ CFM External Static Pressure _____ in.wg

Indoor Fan Motor Size _____ Hp

Exhaust Fan Motor Size _____ Hp

Heating (Electric)

Heating Capacity:

Stage 1 _____ Btuh

Stage 2 _____ Btuh

Heating Capacity Total _____ Btuh

Stage 1 _____ kW

Stage 2 _____ kW

Heating Capacity Total _____ kW

50KC

ELECTRICAL DATA

Power Supply to Unit _____ Volts _____ Phase _____ Hz

Minimum Circuit Amps _____ Maximum Overcurrent Protection _____

SUBMITTAL DATA

Job Name _____

Architect _____

Engineer _____

Contractor _____

Unit Designation _____

FACTORY-INSTALLED OPTIONS (FIOPs)

Economizer with DRY BULB sensing and barometric relief*

Standard Air Leak Dampers —

- Models with W7212 controller provides standard non-diagnostic control. EconoMi\$er IV.
- Models with W7220 controller meets California Title 24 (section 120.2) Fault Detection and Diagnostic (FDD) requirements. EconoMi\$er X.
- Models with RTU Open controller meets California Title 24 (section 120.2) Fault Detection and Diagnostic (FDD) requirements. EconoMi\$er 2.
- Models with PremierLink controller. PremierLink controller does not meet California Title 24 Section 120.2 Fault Detection and Diagnostic (FDD) requirement. EconoMi\$er 2.

Economizer with ENTHALPY sensing and barometric relief*

Standard Air Leak Dampers —

- Models with W7212 controller provides standard non-diagnostic control. EconoMi\$er IV.
- Models with W7220 controller meets California Title 24 (section 120.2) Fault Detection and Diagnostic (FDD) requirements. EconoMi\$er X.
- Models with RTU Open controller meets California Title 24 (section 120.2) Fault Detection and Diagnostic (FDD) requirements. EconoMi\$er 2.
- Models with PremierLink controller. PremierLink controller does not meet California Title 24 Section 120.2 Fault Detection and Diagnostic (FDD) requirement. EconoMi\$er 2.

Economizer with DRY BULB sensing and barometric relief*

ULTRA LOW LEAK Air Dampers —

- Models with W7220 controller meets California Title 24 (section 120.2) Fault Detection and Diagnostic (FDD) requirements, has return, outside air and relief damper leakage that meets Title 24 (section 140.4 and ASHRAE 90.1) requirements - plus 5 year limited parts warranty. EconoMi\$er X.
- Models with RTU Open controller meets California Title 24 (section 120.2) Fault Detection and Diagnostic (FDD) requirements, has return, outside air and relief damper leakage that meets Title 24 (section 140.4 and ASHRAE 90.1) requirements - plus 5 year limited parts warranty. EconoMi\$er 2.

Economizer with ENTHALPY sensing and barometric relief*

ULTRA LOW LEAK Air Dampers —

- Models with W7220 controller meets California Title 24 (section 120.2) Fault Detection and Diagnostic (FDD) requirements, has return, outside air and relief damper leakage that meets Title 24 (section 140.4 and ASHRAE 90.1) requirements - plus 5 year limited parts warranty. EconoMi\$er X.
- Models with RTU Open controller meets California Title 24 (section 120.2) Fault Detection and Diagnostic (FDD) requirements, has return, outside air and relief damper leakage that meets Title 24 (section 140.4 and ASHRAE 90.1) requirements - plus 5 year limited parts warranty. EconoMi\$er 2.

RTU Open multi-protocol controller communicates to LON, MODBUS, BACNET and Johnson N2 protocols.

CCN Direct Digital Control (DDC) - PremierLink™

Through the base connectors electric conduit

Humidi-MiZer® adaptive dehumidification system* (this option also includes Motormaster I controls)

2 position motorized outdoor air damper*

Non-fused disconnect

Powered 115-volt convenience outlet*

Non-powered 115-volt convenience outlet

High static evaporator fan motor

Return Air smoke detector

Supply Air smoke detector

CO₂ sensor

Condenser hail guard - louvered style*

Special coating protection for evaporator and condenser coils*

* Not available on single phase (-3) voltage models.

OPTIONAL WARRANTIES

Complete Unit Parts only up to 5 years

Complete Unit Parts and Labor up to 5 years

Many other optional warranties are available.

See the *Commercial Start-Up and Optional Extended Warranty Price* price pages for further information.

FIELD INSTALLED ACCESSORIES

Economizer with DRY BULB sensing and barometric relief

Standard Air Leak Dampers —

- Models with W7212 controller provides standard non-diagnostic control. EconoMi\$er IV.
- Models with W7220 controller meets California Title 24 (section 120.2) Fault Detection and Diagnostic (FDD) requirements. EconoMi\$er X.
- Models with RTU Open controller meets California Title 24 (section 120.2) Fault Detection and Diagnostic (FDD) requirements. EconoMi\$er 2.
- Models with PremierLink controller. PremierLink controller does not meet California Title 24 Section 120.2 Fault Detection and Diagnostic (FDD) requirement. EconoMi\$er 2.

Economizer with ENTHALPY sensing and barometric relief

Standard Air Leak Dampers —

- Models with W7212 controller provides standard non-diagnostic control. EconoMi\$er IV.
- Models with W7220 controller meets California Title 24 (section 120.2) Fault Detection and Diagnostic (FDD) requirements. EconoMi\$er X.
- Models with RTU Open controller meets California Title 24 (section 120.2) Fault Detection and Diagnostic (FDD) requirements. EconoMi\$er 2.
- Models with PremierLink controller. PremierLink controller does not meet California Title 24 Section 120.2 Fault Detection and Diagnostic (FDD) requirement. EconoMi\$er 2.

Economizer with DRY BULB sensing and barometric relief

ULTRA LOW LEAK Air Dampers —

- Models with W7220 controller meets California Title 24 (section 120.2) Fault Detection and Diagnostic (FDD) requirements, has return, outside air and relief damper leakage that meets Title 24 (section 140.4 and ASHRAE 90.1) requirements. EconoMi\$er X.
- Models with RTU Open controller meets California Title 24 (section 120.2) Fault Detection and Diagnostic (FDD) requirements, has return, outside air and relief damper leakage that meets Title 24 (section 140.4 and ASHRAE 90.1) requirements. EconoMi\$er 2.

Economizer with ENTHALPY sensing and barometric relief

ULTRA LOW LEAK Air Dampers —

- Models with W7220 controller meets California Title 24 (section 120.2) Fault Detection and Diagnostic (FDD) requirements, has return, outside air and relief damper leakage that meets Title 24 (section 140.4 and ASHRAE 90.1) requirements. EconoMi\$er X.
- Models with RTU Open controller meets California Title 24 (section 120.2) Fault Detection and Diagnostic (FDD) requirements, has return, outside air and relief damper leakage that meets Title 24 (section 140.4 and ASHRAE 90.1) requirements. EconoMi\$er 2.

Energy Demand System - wireless automated demand management and response controllers

- Electric heater(s)
- Power exhaust - prop fan design
- Two-position motorized outside air damper
- Manual outside air damper 25%
- Manual outside air damper 50%
- Roofcurb - 14 inch (356mm) tall
- Roofcurb - 24 inch (610mm) tall
- Thru-the-bottom connections—electrical
- Condenser hail guard - louvered style
- Phase monitor (loss of phase/phase reversal)
- Winter start kit, down to 25°F (-4°C)
- Fan/Filter status switch
- Low ambient head pressure controller, down to 0°F (-18°C)
- Low ambient head pressure controller, down to -20°F (-29°C)
- Time Guard II compressor anti-cycle protection
- Thermostats and Sensors

Economizer Sensors

- Single Dry bulb control
- Differential Dry bulb control
- Single enthalpy control
- Differential enthalpy control
- CO₂ - wall mounted
- CO₂ - duct mounted
- CO₂ - unit mounted

CERTIFIED DIMENSION 50KC*04-06

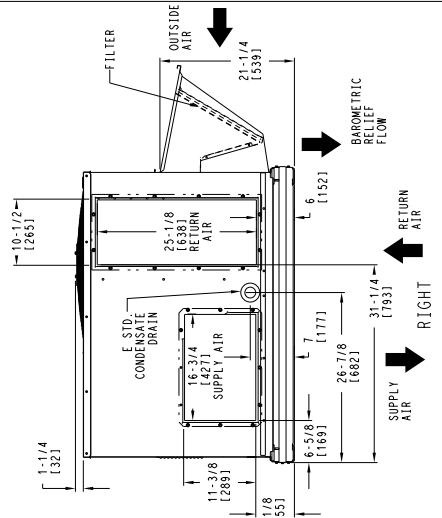
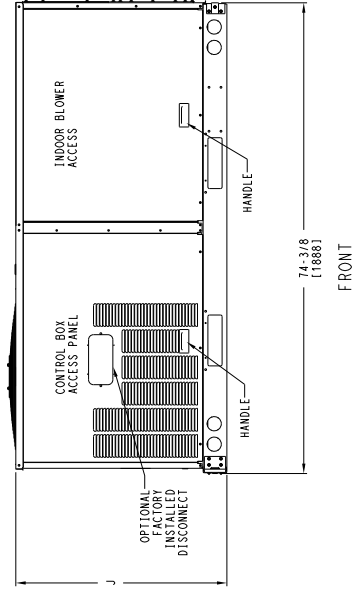
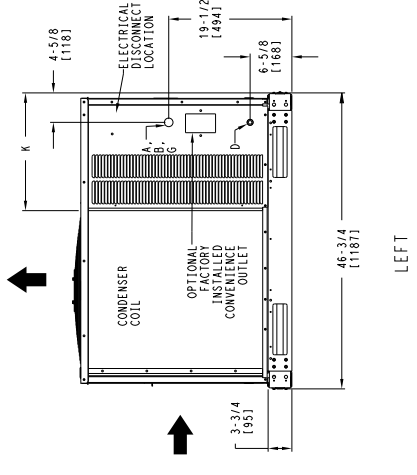
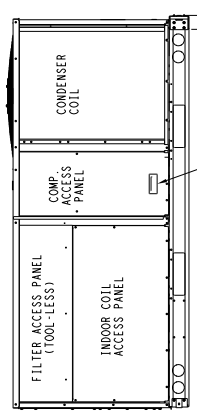
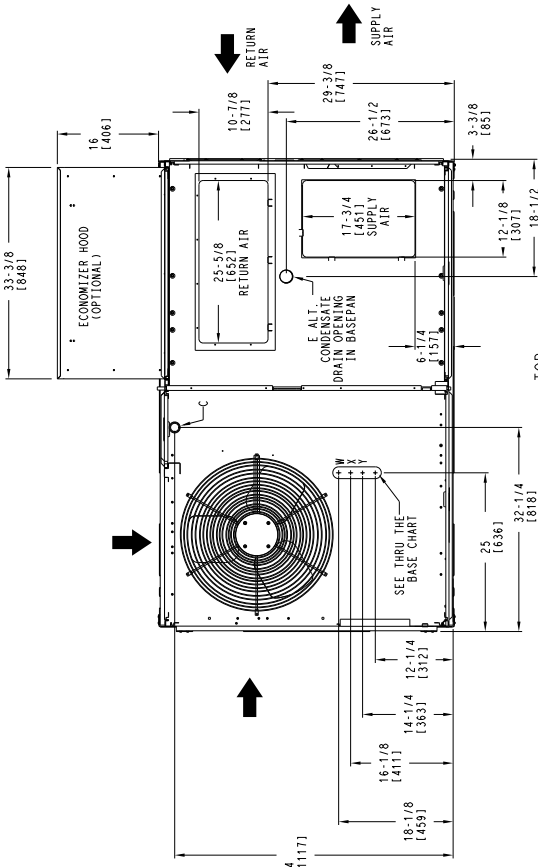
NOTES:
 1. DIMENSIONS ARE IN INCHES, DIMENSIONS IN [] ARE IN MILLIMETERS.
 2. CENTER OF GRAVITY
 3. DIRECTION OF AIR FLOW

UNIT	J	K (1 PHASE)	L (3 PHASE)
50KC 04	33 3/8 [847]	14 7/8 [371]	14 7/8 [371]
50KC 05	33 3/8 [847]	14 7/8 [371]	18 5/8 [472]
50KC 06	41 3/8 [1051]	14 7/8 [371]	18 5/8 [472]

UNITED TECHNOLOGIES STORAGE, NY
 CARRIER 13221
 THIS DOCUMENT IS THE PROPERTY OF CARRIER CORPORATION AND IS DELIVERED UPON THE EXPRESS CONDITION THAT THE USER SHALL NOT REPRODUCE, COPY, OR TRANSMIT THIS DOCUMENT IN ANY MANNER WITHOUT CARRIER CORPORATION'S WRITTEN CONSENT.

CONNECTION SIZES	
A	1 3/8" [35] DIA. FIELD POWER SUPPLY HOLE
B	2" [51] DIA. POWER SUPPLY KNOCKOUT
C	1 3/4" [44] DIA. GAUGE ACCESS PLUG
D	7/8" [22] DIA. FIELD CONTROL WIRING HOLE
E	3/4" - 14 NPT CONDENSATE DRAIN
G	2 1/2" [64] DIA. POWER SUPPLY KNOCK-OUT

THRU-THE-BASE CHART THESE HOLES REQUIRED FOR USE (CRIMP/PHOTO IAD)	
W	1/2" ACC. 7/8" [22.2]
X	1/2" 24V 7/8" [22.2]
Y	3/4" [001] POWER 1 1/8" [28.4]
FOR "THRU-THE-BASEPAN" FACTORY OPTION, FITTINGS FOR ONLY X & Y ARE PROVIDED	
*	SELECT EITHER 3/4" OR 1/2" FOR POWER, DEPENDING ON WIRE SIZE




SHEET	DATE	SUPERSEDES	REV
1 OF 2	09-16-14	-	-

50KC 04-06 SINGLE ZONE ELECTRICAL COOLING WITH ELECTRIC HEAT

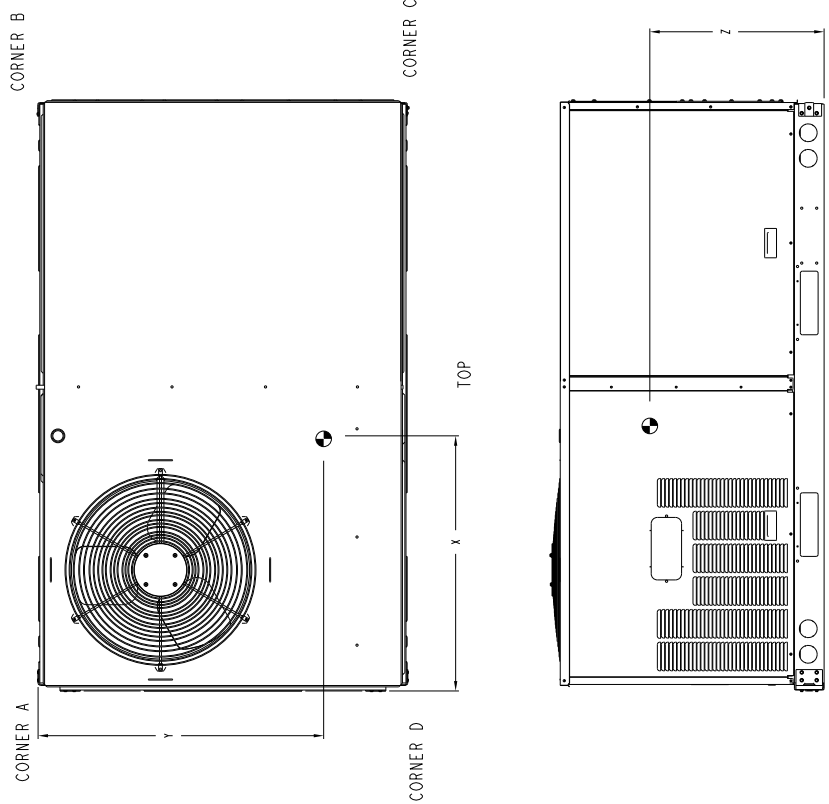
48KC000282

CERTIFIED DIMENSION 50KC*04-06


UNITED TECHNOLOGIES CARRIER
 P.O. BOX 4088
 FARMINGDALE, NY 11737
 THIS DOCUMENT IS THE PROPERTY OF CARRIER CORPORATION AND IS DELIVERED UPON THE EXPRESS CONDITION THAT THE CONTENTS WILL NOT BE DISCLOSED OR USED WITHOUT CARRIER CORPORATION'S WRITTEN CONSENT.
 SUBMISSION OF THESE DRAWINGS OR DOCUMENTS DOES NOT CONSTITUTE AN ACCEPTANCE OF CONTRACT.

UNIT	CORNER WEIGHT (A)		CORNER WEIGHT (B)		CORNER WEIGHT (C)		CORNER WEIGHT (D)		C.G.			HEIGHT	
	LBS.	KG.	LBS.	KG.	LBS.	KG.	LBS.	KG.	X	Y	Z		
50KC 04	445	201	127	57	104	47	97	44	118	53	33 1/2 (851)	22 1/2 (571)	19 3/4 (501)
50KC 05	499	226	140	63	118	53	110	50	130	59	34 1/8 (866)	22 1/2 (571)	19 3/4 (501)
50KC 06	552	250	143	65	149	67	133	60	127	57	38 (965)	22 (559)	20 3/4 (527)

* STANDARD UNIT WEIGHT IS WITHOUT ELECTRIC HEAT AND WITHOUT PACKAGING. FOR OTHER OPTIONS AND ACCESSORIES, REFER TO THE PRODUCT DATA CATALOG.



SHEET 2 OF 2	DATE 09-16-14	SUPERCHARGERS -	50KC 04-06 SINGLE ZONE ELECTRICAL COOLING WITH ELECTRIC HEAT	48KC000282	REV -
-----------------	------------------	--------------------	--	------------	----------

C14252

50KC

ROOF CURB DETAILS

