

38AUZ/D

50Hz

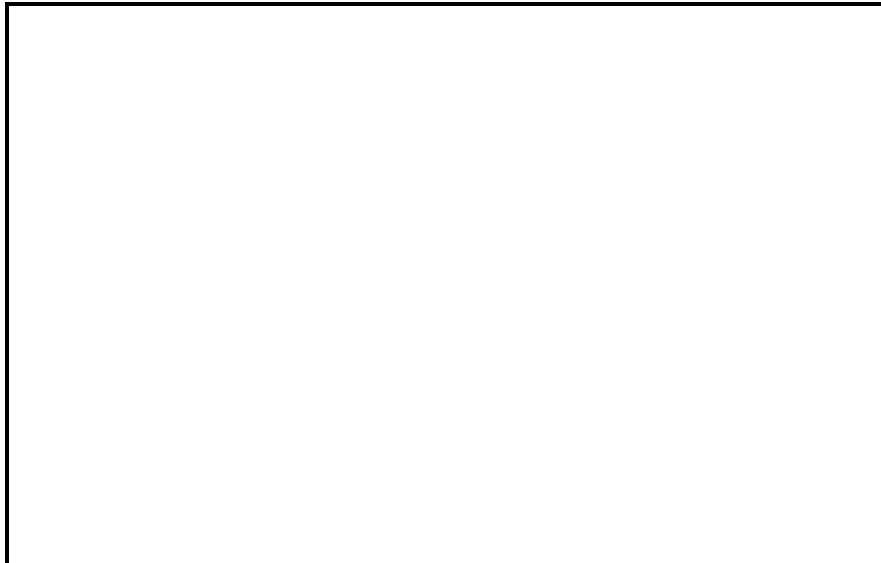
**Air-Cooled Condensing Units
with Puron® (R-410A) Refrigerant
Sizes: 07 to 25 (18.3 to 59.2 kW)**

Carrier

turn to the experts 

Submittal Data

- **PERFORMANCE DATA**
- **CERTIFIED DIMENSION PRINTS**



Job Data: _____ Location: _____

Buyer: _____ Buyer P.O.#: _____ Carrier: _____

Unit Number: _____ Model Number: _____

Unit Designation: _____

Performance Data Certified By: _____



Certified to ISO 9001:2000/2008



DESCRIPTION

38AU units are air-cooled condensing units which are easily connected by refrigerant lines and low voltage control wiring to matching Carrier packaged air-handling units or other suitable evaporator units to provide customized packages covering a wide range of cooling requirements. Powerful, direct-drive axial-flow fans are mounted horizontally with vertical coils, resulting in a desirable low silhouette. They are ideal for new construction or renovation where quality and performance are required.

STANDARD FEATURES

- Puron (R-410A) HFC refrigerant
- Single Circuit (38AUZ) are available in 07 to 25 models.
- Dual Circuit (38AUD) are available in 12 to 25 models.
- Novation™ condenser coil available on size 07 - 16 units.
- Round Copper Tube/Aluminum Plate Fin (RTPF) condenser coil available on size 25 units.
- Cooling operating range up to 52°C (125°F) and down to 2°C (35°F)
- Brass suction and liquid line service valves
- Fully Hermetic Scroll compressor with crankcase heater
- New terminal board facilitating simple safety circuit troubleshooting and simplified control box arrangement. 24-volt 75va control system.
- High and low pressure switches.
- Designed in accordance with Underwriters' Laboratories Standard 1995 and listed by UL and UL, Canada
- Comfort Alert™ Diagnostic Board:
 - LED Go-No-Go and fault code
 - Built in time guard anti short cycle
 - Phase protection
 - Fault code retention logic
 - Low voltage compressor contactor protection
- Full perimeter base rails with built-in rigging adapters and fork truck slots.
- Pre-painted exterior panels and primer-coated interior panels tested to 500 hours salt spray protection.
- Direct drive permanently lubricated condenser fan motors.
- All units factory run tested.
- Compressors mounted on independent vibration isolators

PERFORMANCE DATA

Cooling Capacity: _____ Btuh Compressor Power Input: _____ kW
Ambient Air Temperature: _____ °C Compressor Fan Power Input: _____ kW
Saturated Suction Temperature: _____ °C Compressor Unloading Steps: _____ %
Saturated Condensing Temperature: _____ °C Minimum Ambient Air Temperature
Standard Unit: _____ °C

ELECTRICAL DATA

Power Supply to Unit _____ Volts _____ Phase _____ Hz
Minimum Circuit Amps _____ Maximum Overcurrent Protection _____

38AU

SUBMITTAL DATA

Job Name _____
Architect _____
Engineer _____
Contractor _____
Unit Designation _____

OPTIONS AND ACCESSORIES

FACTORY-INSTALLED OPTIONS (FIOPs)

- E-Coated Condenser Coil - required for use in any non standard (Non Corrosive) environment.
- Additional Pre Coat on size 25 units
- Motormaster[®] Low ambient head pressure controller, down to -29°C (-20°F)
- Non-fused disconnect
- Condenser hail guard - louvered style

FIELD INSTALLED ACCESSORIES

- Motormaster[®] Low ambient head pressure controller, down to -29°C (-20°F)
- Winter start kit, down to -4°C (25°F)
- Suction Line Accumulator
- Liquid Line Solenoid Valve
- Solenoid Coil
- Filter Drier
- Sight Glass
- Condenser coil hail guard - louvered style
- Wired Grille - Condenser Coil guard, 07 to 14 size units only.
- Thermostats and thermostat accessories

CERTIFIED DIMENSION 38AU*07, 08, 12, 14

UNIT	ELECTRICAL CHARACTERISTICS		CORNER A				CORNER B				CORNER C				CORNER D				CENTER OF GRAVITY				UNIT HEIGHT		
	STD.	UNIT WT.	KG.	LBS.	KG.	LBS.	KG.	LBS.	KG.	LBS.	KG.	LBS.	KG.	LBS.	KG.	LBS.	X	Y	Z	H					
38AUZ-07	400	3-50	328	149	128	58	68	31	62	28	70	32	21	533	41	19	482	61	13	1330	21	42	3/8	1016	01
38AUZ-08	400	3-50	353	160	138	63	72	33	65	29	78	35	19	482	61	23	584	21	13	1330	21	42	3/8	1016	01
38AUD-12	400	3-50	499	226	193	88	111	50	72	38	123	56	20	508	01	23	584	21	15	1381	01	50	3/8	1219	21
38AUD-14	400	3-50	505	229	190	86	88	40	76	34	151	68	20	508	01	24	609	61	15	1381	01	50	3/8	1219	21

P.O. BOX 4888
 UNITED TECHNOLOGIES STRAUSSE, NY
 13201
 CARRIER

THIS DOCUMENT IS THE PROPERTY OF CARRIER CORPORATION
 IT IS TO BE USED ONLY FOR THE UNIT AND NOT FOR ANY OTHER
 PURPOSES. IT IS NOT TO BE REPRODUCED OR TRANSMITTED IN ANY
 FORM OR BY ANY MEANS, ELECTRONIC OR MECHANICAL, WITHOUT
 CARRIER'S WRITTEN CONSENT.
 SUBMISSION OF THESE DRAWINGS OR DOCUMENTS
 DOES NOT CONSTITUTE PART PERFORMANCE OR
 ACCEPTANCE OF CONTRACT.

NOTES:
 1. MINIMUM CLEARANCE (LOCAL CODES OR JURISDICTION MAY VARY)
 FROM BOTTOM TO COMBUSTIBLE SURFACES: 0 INCHES
 2. OUTDOOR COIL FOR PROPER AIR FLOW: 36 INCHES (914)
 ONE SIDE, 12 INCHES (305) THE OTHER. THE SIDE GETTING THE
 GREATER CLEARANCE IS OPTIONAL.
 3. CLEARANCE FROM WALLS: 60 INCHES (1524), TO ASSURE PROPER OUTDOOR FAN
 OPERATION.
 4. BETWEEN UNITS: CONTROL BOX SIDE, 42 INCHES (1067) PER NEC.
 5. BETWEEN UNIT AND UNGROUNDED SURFACES: CONTROL BOX
 SIDE, 36 INCHES (914) PER NEC.
 6. BETWEEN UNIT AND CONCRETE WALLS AND OTHER
 GROUNDED SURFACES: CONTROL BOX SIDE, 42 INCHES (1067) PER NEC.
 7. WITH EXCEPTION OF THE CLEARANCE FOR THE OUTDOOR
 COIL AS STATED IN NOTE 1B, A REMOVABLE FENCE
 SHALL BE INSTALLED ON ALL UNITS TO PREVENT ACCESS TO
 UNITS. UNITS SHALL BE INSTALLED ON COMBUSTIBLE FLOORS MADE
 FROM WOOD OR CLASS A, B, OR C ROOF COVERING MATERIAL.

REAR VIEW
 OUTDOOR COIL
 59-3/8 (1509)
 CORNER "B"
 CORNER "C"
 THIS SIDE ONLY FOR 38AUZ14 & 38AUD14
 CORNER "A"
 CORNER "D"

TOP VIEW
 SUCTON CONNECTIONS (SEE CHART FOR SIZE)
 LIQUID CONNECTIONS (SEE CHART FOR SIZE)
 6-1/8 (155)
 5-3/8 (135)
 CG
 CENTER OF GRAVITY
 DIRECTION OF AIR FLOW
 DIMENSIONS IN () ARE IN MM

RIGHT SIDE VIEW (FOR 38AUZ SYSTEMS)
 SUCTON CONNECTION (SEE CHART FOR SIZE)
 LIQUID CONNECTION (SEE CHART FOR SIZE)
 5-7/8 (149)
 11-1/4 (285)
 8-1/8 (205)

LEFT SIDE VIEW
 OUTDOOR COIL
 3-3/4 (96)
 13-1/4 (337)
 ELECTRICAL DISCONNECT LOCATION
 OPTIONAL FACTORY INSTALLED CONVENIENCE OUTLET LOCATION (SEE CHART FOR SIZE)
 1-3/8 (34.5) POWER ENTRY WITH 50.0/58.0/65.0 MM K.O.
 OPTIONAL FACTORY INSTALLED CONVENIENCE OUTLET LOCATION (SEE CHART FOR SIZE)
 1/2" (12.7) FIELD ENTRY SERVICE PORT
 6-5/8 (168)
 4-5/8 (118)

FRONT VIEW
 COMPRESSOR ACCESS PANEL
 CG
 CENTER OF GRAVITY
 HANDLE
 45-7/8 (1165)

RIGHT SIDE VIEW (FOR 38AUD SYSTEMS)
 SUCTON CONNECTION (SEE CHART FOR SIZE)
 LIQUID CONNECTION (SEE CHART FOR SIZE)
 5-7/8 (149)
 11-1/4 (285)
 8-1/8 (205)

SERVICE VALVE CONNECTIONS
 UNIT SUCTION LIQUID
 38AUZ07 1-1/8 (28.6) 3/8 (19.5)
 38AUZ08 1-1/8 (28.6) 1/2 (12.7)
 38AUD12 1-1/8 (28.6) 3/8 (19.5)
 38AUD14 1-3/8 (34.9) 1/2 (12.7)

DATE: 05/25/10
 SUPERCHARGES: 38AUZ-07-08, 38AUD-12-14
 CONDENSING UNIT
 REV: 38AU500349

C10606

CERTIFIED DIMENSION 38AUD16

UNIT 38AUD16	ELECTRICAL CHARACTERISTICS 400-3-50	STD. UNIT WT. LBS. KG.	CORNER A LBS. KG.	CORNER B LBS. KG.	CORNER C LBS. KG.	CORNER D LBS. KG.	CENTER OF GRAVITY			UNIT HEIGHT H
		220 100	134 61	135 61.5	144 65.5	X 38 [965.2]	Y 19'-1/2 [495.3]	Z 15'-1/8 [383.8]	150'-3/8 [1279.2]	

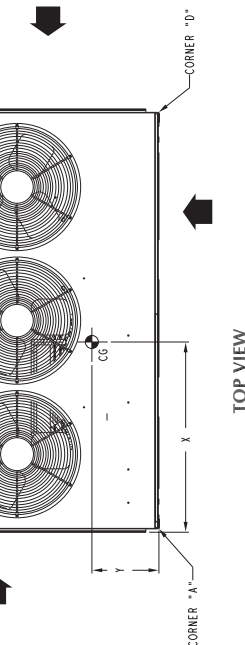
P.O. BOX 4888
TECHNOLOGIES SYRACUSE, NY
13221

UNITED
TECHNOLOGIES
CARRIER

THIS DOCUMENT IS THE PROPERTY OF CARRIER CORPORATION AND IS TO BE USED ONLY FOR THE PROJECT AND/OR EQUIPMENT SPECIFIED HEREIN. IT IS NOT TO BE REPRODUCED OR TRANSMITTED IN ANY FORM OR BY ANY MEANS, ELECTRONIC OR MECHANICAL, INCLUDING PHOTOCOPYING, RECORDING, OR BY ANY INFORMATION STORAGE AND RETRIEVAL SYSTEM, WITHOUT THE WRITTEN CONSENT OF CARRIER CORPORATION.

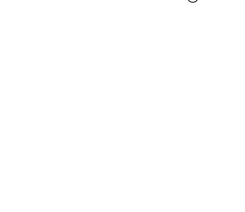
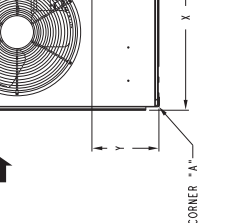
SUBMISSION OF THESE DRAWINGS OR DOCUMENTS DOES NOT CONSTITUTE PART PERFORMANCE OR ACCEPTANCE OF CONTRACT.

- NOTES:**
1. MINIMUM CLEARANCE (LOCAL CODES OR JURISDICTION MAY PREVAIL):
 - A. BOTTOM OF CONDENSING SURFACES: 6 INCHES
 - B. BOTTOM OF COMPRESSOR: 12 INCHES
 - C. ONE SIDE: 12 INCHES THE OTHER: THE SIDE GETTING THE GREATER CLEARANCE IS OPTIONAL.
 - D. OVERHEAD: 60 INCHES, TO ASSURE PROPER OUTDOOR FAN OPERATION.
 - E. BETWEEN UNITS: CONTROL BOX SIDE: 42 INCHES PER NEC. BETWEEN UNITS AND UNGROUNDED SURFACES: CONTROL BOX SIDE: 36 INCHES PER NEC.
 - F. BETWEEN UNIT AND BLOCK OR CONCRETE WALLS AND OTHER SURFACES: 12 INCHES PER NEC.
 2. WITH EXCEPTION OF THE CLEARANCE FOR THE OUTDOOR COIL AS STATED IN NOTE 1B, A REMOVABLE FENCE OR BARRICADE REQUIRES NO CLEARANCE.
 3. UNITS MAY BE INSTALLED ON COMBUSTIBLE FLOORS MADE FROM WOOD OR CLASS A, B OR C ROOF COVERING MATERIAL.



SERVICE VALVE CONNECTIONS	
UNIT	LIQUID
38AUD16	1'-3/8 [34.9] 1/2 [12.7]

DIMENSIONS IN () ARE IN MM



DATE 05/25/10	SUPERSEDES 01/06/09	38AUD 16 CONDENSING UNIT	REV —
------------------	------------------------	-----------------------------	----------

38AU

C10607

CERTIFIED DIMENSION 38AUD25

UNIT 38AUD25	ELECTRICAL CHARACTERISTICS 400-3-50	STD. UNIT WT.	CORNER A	CORNER B	CORNER C	CORNER D	CENTER OF GRAVITY			UNIT HEIGHT				
		KG.	LBS.	KG.	LBS.	KG.	LBS.	KG.	LBS.	X	Y	Z	H	
		900	475	216	58	26.5	242	110	125	57	37-1/4 (946)	1123-1/4 (590.5)	115-1/8 (383.8)	150-3/8 (1279.2)

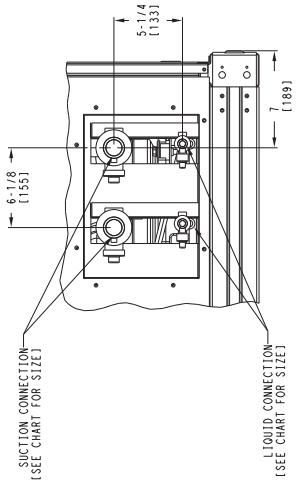
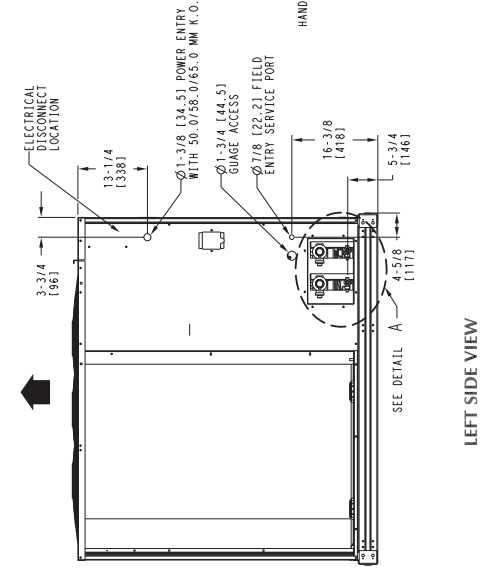
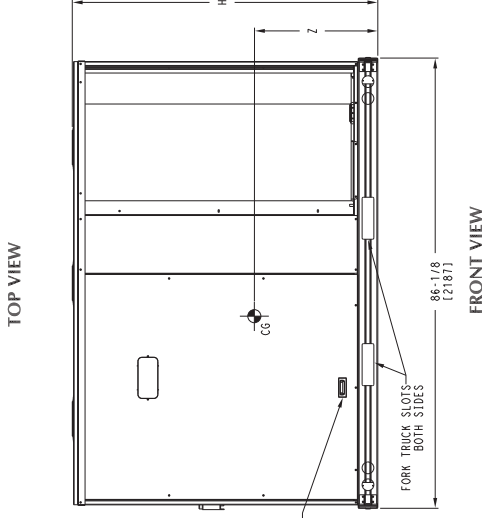
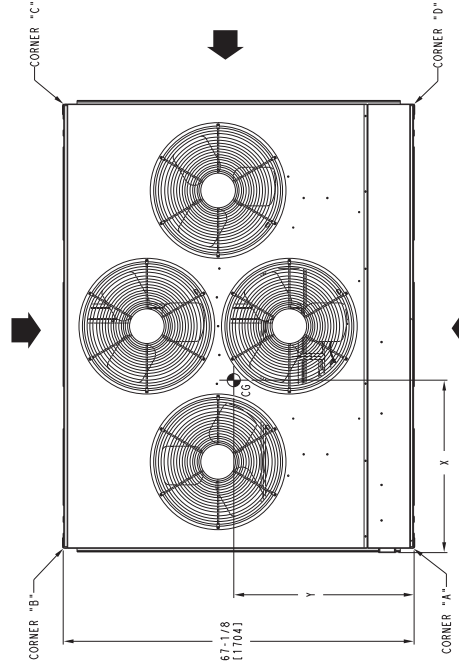
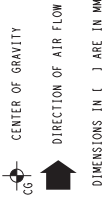
UNITED TECHNOLOGIES SYRACUSE, NY
CARRIER

P.O. BOX 4898
13221

THIS DOCUMENT IS THE PROPERTY OF CARRIER CORPORATION. SUBMISSION OF THESE DRAWINGS OR DOCUMENTS DOES NOT CONSTITUTE PART PERFORMANCE OR ACCEPTANCE OF CONTRACT.
CONTRACTS WILL NOT BE DISCLOSED OR USED WITHOUT CARRIER CORPORATION'S WRITTEN CONSENT.

- NOTES:
- MINIMUM CLEARANCE (LOCAL CODES OR JURISDICTION MAY PREVAIL):
 - BOTTOM TO COMBUSTIBLE SURFACES: 0 INCHES.
 - OUTDOOR COIL, FOR PROPER AIR FLOW: 36 INCHES.
 - BEHIND UNIT: 6 INCHES.
 - BEHIND CONDENSATE PAN: THE SIDE GETTING THE GREASE CLEARANCE OF 10 INCHES.
 - OVERHEAD: 60 INCHES, TO ASSURE PROPER OUTDOOR FAN OPERATION.
 - BETWEEN UNITS: CONTROL BOX SIDE: 42 INCHES PER NEC.
 - BETWEEN UNITS: SUPPLEMENTED SURFACES: CONTROL BOX SIDE: 36 INCHES PER NEC.
 - BETWEEN UNIT AND BLOCK OR CONCRETE WALLS AND OTHER GROUNDED SURFACES: CONTROL BOX SIDE: 42 INCHES PER NEC.
 - WITH EXISTING WALLS, MINIMUM CLEARANCE ON THE OUTDOOR COIL SIDE: 60 INCHES TO THE WALL OR MOBILE FENCE OR BARRICADE REQUIRES NO CLEARANCE.
 - UNITS MAY BE INSTALLED ON COMBUSTIBLE FLOORS MADE FROM WOOD OR CLASS A, B OR C ROOF COVERING MATERIAL.

SERVICE VALVE CONNECTIONS	
UNIT	LIQUID
38AUD25	1-3/8 (34.9) 1/2 (12.7)



DATE	05/25/10	SUPERCEDES	---	38AUD 25 CONDENSING UNIT	REV	---
------	----------	------------	-----	--------------------------	-----	-----