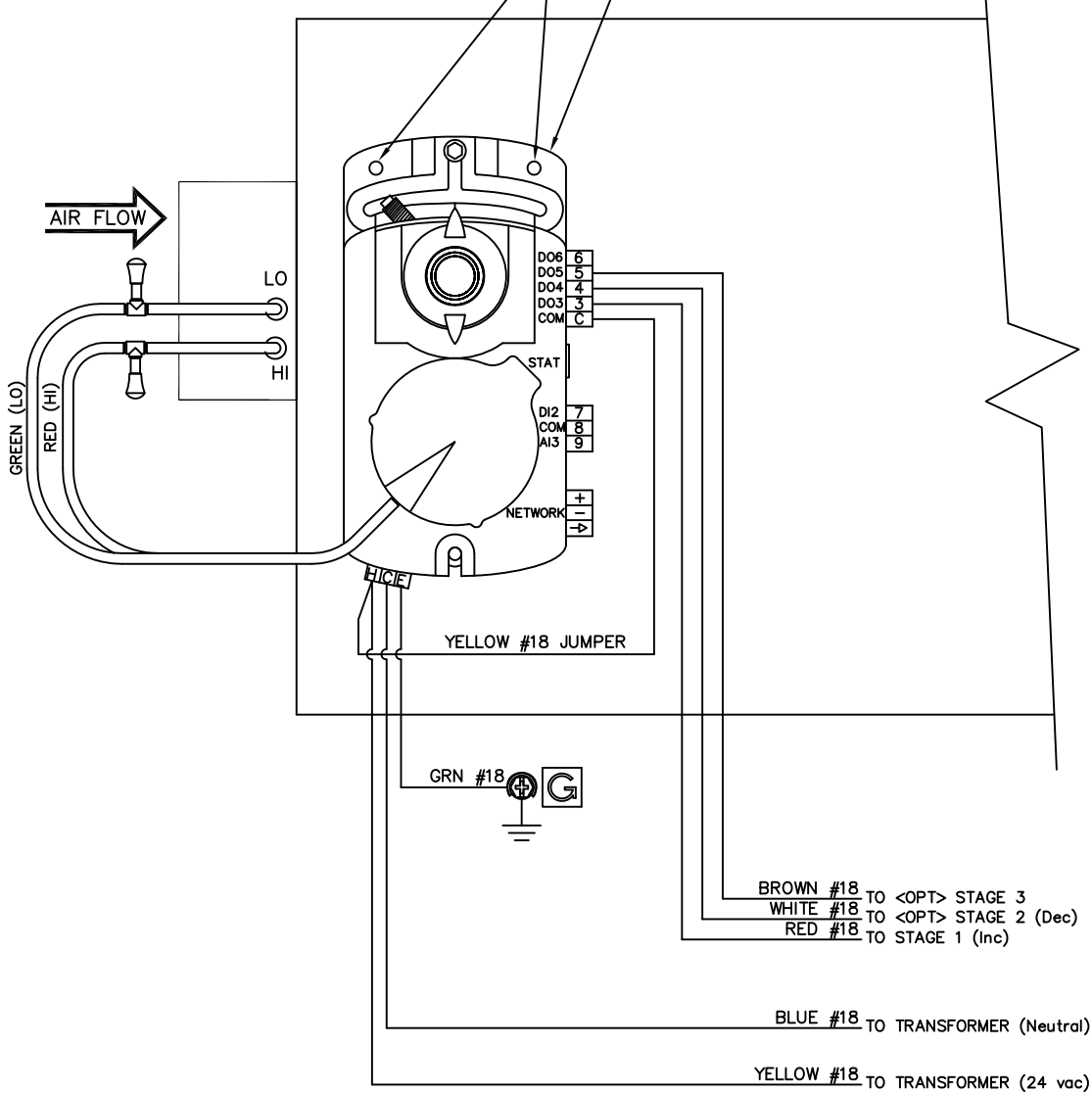


SINGLE DUCT TERMINAL UNIT WITH SIEMENS 550-430 CONTROLLER / ACTUATOR WITH ELECTRIC HEAT

CONTROL PACKAGE SLJ5

DO NOT USE THESE HOLES FOR MOUNTING

SIEMENS 550-430 CONTROLLER/ACTUATOR SUPPLIED BY OTHERS, MOUNTED BY A.S.C.



ACTUATOR NOTE:

VERIFY ACTUATOR BUSHING IS IN THE FULL CCW POSITION. ROTATE DAMPER CCW TO THE FULLY CLOSED POSITION. MOUNT ACTUATOR OVER DAMPER SHAFT AND SECURE TO SHAFT AND ENCLOSURE. TORQUE ACTUATOR SET SCREW TO 60 IN-LB. ENGAGE CLUTCH AND ROTATE DAMPER CW TO THE FULLY OPEN POSITION.

VALUES IN "( )" REPRESENT TERMINATIONS AT EHM CONTROL BOARD FOR LINEAHEAT OPTION

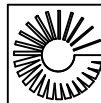
FACTORY PIPING PROVIDED

FACTORY WIRING PROVIDED

WIRING BY OTHERS

THIS DOCUMENT AND ITS CONTENTS REMAIN THE EXCLUSIVE PROPERTY OF CARRIER CORPORATION AND IS DELIVERED UPON THE EXPRESS CONDITION THAT THE CONTENTS WILL NOT BE DISCLOSED OR USED WITHOUT CARRIER CORPORATION'S WRITTEN CONSENT

A	K0002279	BWM	12/10	BWM	DRAWN BY	DATE
REV.	E. C. O. NUMBER	BY	DATE	APPVD	BWM	12/10
	351245SLJ5			APPVD	BWM	12/10
	ASSEMBLY NUMBER		REPLACES OLD FORM/EFF. DATE			



UNITED TECHNOLOGIES CARRIER

PO BOX 4808 SYRACUSE, NY 13221

DRAWING NO. 775028-J4 SCALE N/A SHEET 1/1