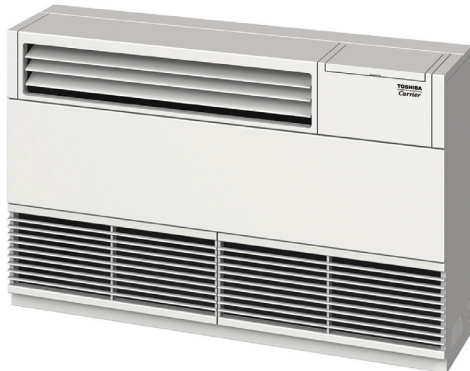


SMMS-e / SHRM-e VRF Indoor Unit MML-AP0124H2UL - Floor Console - Exposed

TOSHIBA
Carrier

Submittal Data

Job Data _____ Location _____
 Buyer _____ Buyer PO # _____ Carrier # _____
 Unit Number _____ Model Number _____
 Performance Data Certified By _____ Date _____



SMMS-e / SHRM-e VRF Floor Console - Exposed Features

- R-410A Refrigerant
- Six sizes from 7,500 to 24,000 Btu/h
- Piping, wiring, and drain can be routed from side (right), bottom, or back.
- Five-year parts limited warranty

Indoor Unit Model	MML-AP0124H2UL	
PERFORMANCE		
Cooling Rated Capacity	Btu/h	12,000
Heating Rated Capacity	Btu/h	13,500
Fan Type (Qty)		Centrifugal (1)
Airflow (L / M / H)	CFM	380 / 460 / 530
Sound Pressure (L / M / H)	dBA	40 / 44 / 47 (208V) 42 / 46 / 50 (230V)
ELECTRICAL		
Power Supply	V/Ph/Hz	208-230/1/60
Power Consumption (Input)	kW	0.080 (208V) 0.093 (230V)
Full Load Amps (FLA)	A	0.5
Minimum Circuit Amps	A	0.6
Maximum Overcurrent Protection	A	15
Motor Type	AC Inverter Driven	
Motor Watts		45

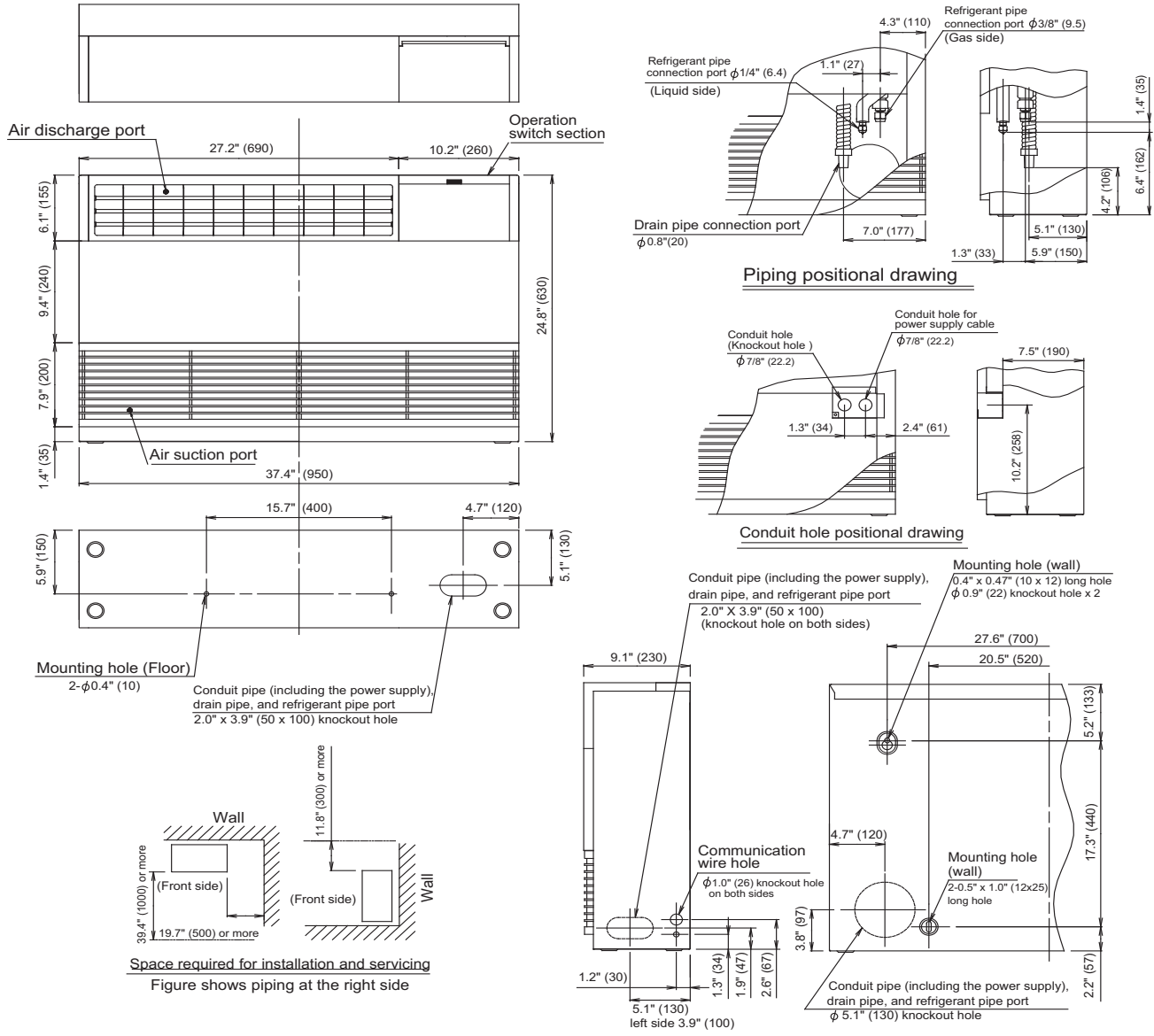
PHYSICAL DATA		
Pipe Connection Size - Liquid (High Pressure)	in.	1/4 (Flare)
Pipe Connection Size - Gas (Low Pressure)	in.	3/8 (Flare)
Pipe Connection Size - Drain (OD)	in.	0.8
Refrigerant	R-410A	
External Finish	Silky Shade (Munsell 1Y8.5/0.5)	
Unit Width	in.	37.4
Unit Height	in.	24.8
Unit Depth	in.	9.1
Unit Net Weight	lb	81.6

ACCESSORIES (Optional)

- Lite Vision Plus Remote Controller (7-Day Programmable) RBC-AMS51E-ES
- Simple Wired Remote Control RBC-AS41UL
- Stand-Alone Receiver with Wireless Remote TCB-AX32UL
- Remote Sensor TCB-TC41LUL
- Wired Remote Controller RBC-AMT32UL

Manufacturer reserves the right to discontinue, or change at any time, specifications or designs without notice and without incurring obligations.

DIMENSIONAL DRAWING INDOOR UNIT FLOOR CONSOLE - EXPOSED MML-AP0124H2UL



Units are in inches (mm)

