



30XW150-400 Vibration Isolation Kit Accessory

Installation Instructions

Part No. 00EFN900004200A

SAFETY CONSIDERATIONS

Installing, starting up, and servicing air-conditioning equipment can be hazardous due to system pressures, electrical components, and equipment location.

Only trained, qualified installers and service mechanics should install, start up, and service this equipment. When working on the equipment, observe precautions in the literature and on tags, stickers, and labels attached to the equipment. Follow all safety codes. Wear safety glasses and work gloves.

INTRODUCTION

The vibration isolation accessory kit consists of 4 resilient neoprene pads (Fig. 1). The pads are oil-resistant and have a cross-ribbed design with ribs of alternating heights. The 30XW condensers each have two mounting channels that are 10 in. wide and up to $47\frac{3}{8}$ in. long. Two pads are mounted end to end under each channel.

PREINSTALLATION

Remove accessory from packaging and inspect shipment for damage. File claim with shipping company if accessory is damaged or incomplete.

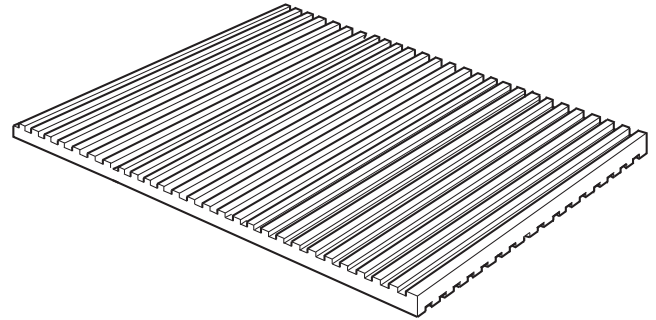
INSTALLATION

Install the accessory kit as follows:

1. The accessory kit is usually installed at the initial unit installation. If the kit is to be installed after the unit is already in place, disconnect all power to the unit first.

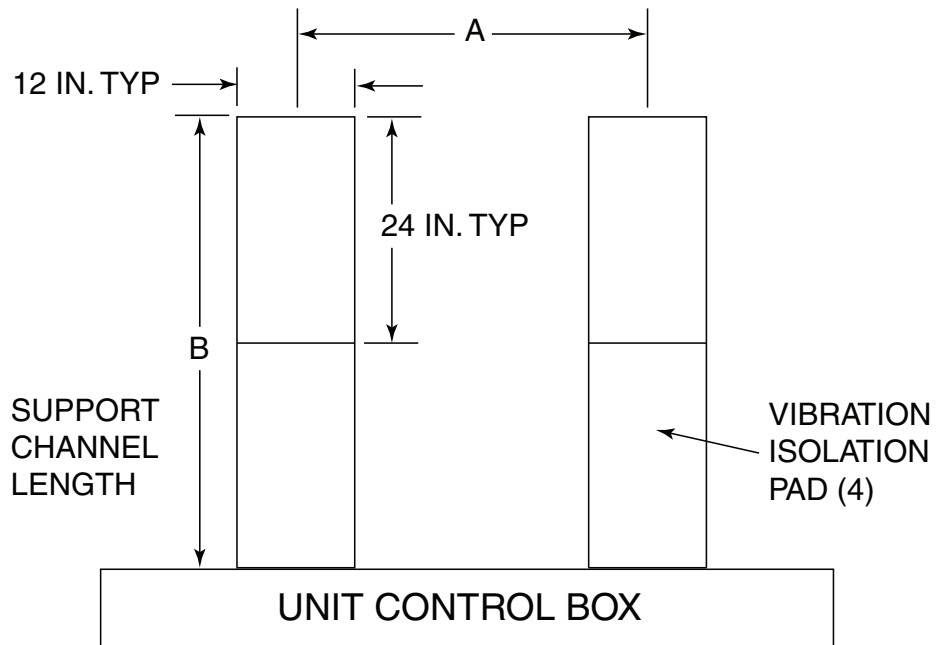
WARNING

To avoid all possible electrical shock and personal injury, all power to unit must be disconnected before working on unit. Tag all disconnects to alert others unit is being worked on.



**Fig. 1 — Vibration Isolation Pad
(Typically 12 x 24 x $\frac{1}{4}$ in.)**

2. Rig unit per base unit installation instructions and raise unit above its final installation location.
3. Insert two pads under each of the 2 condenser mounting support channels. See Fig. 2.
4. Lower unit in place.
5. Insert bolts through unit feet and pad material. If nuts are used on mounting bolts, tighten nuts finger tight. **NOTE:** Do not torque nuts, as this reduces the effectiveness of the vibration isolation pads.
6. Restore unit power or continue with initial unit installation.



NOTE: Vibration isolation pads are 1/4 in. thick.

PLAN VIEW

CHANNEL CENTER AND LENGTH DIMENSIONS (in.)

30XW UNIT SIZE	A	B
150-200	56.39	42.90
250-300	56.39	47.38
325-400	56.39	47.38

Fig. 2 — Mounting Support Channel and Vibration Isolation Pad Locations