



# 48/50A020-060, 48/50P030-100, 48/50Z030-105 Plugged Filter Indicator Accessory

## Installation and Operating Instructions

Part Number CRSTATUS002A00

### PACKAGE USAGE AND CONTENTS

ITEM	DESCRIPTION	QTY	PART NUMBER	UNIT 48/50
1	Switch	1	HK06WC029	A,P,Z
—	Screw — 8-18x1/2 in.	2	—	—
—	Screw — 6-20x3/4 in.	2	—	A
2	Control Tube	2	50TG501183	A
—	Wire Tie	1	—	—
3	Tube Fitting	1	KA70PP010	—
4	Hex Nut — #10-32 Brass	1	AT39QA131	—
5	Wire Tie	12	HY76TB045	P,Z
6	Tube Bracket	2	50DW503955	P,Z
7	Grommet	2	KA56GR140	A,P,Z
8	Control Tube	1	50NP500026	P,Z
9	Control Tube	1	50DW503993	P,Z
10	Bushing	1	HY93NH028	P,Z
11	Screw	2	AL48AM307	P,Z

### SAFETY CONSIDERATIONS

Installation and servicing of air-conditioning equipment can be hazardous due to system pressure and electrical components. Only trained and qualified service personnel should install, repair, or service air-conditioning equipment.

Untrained personnel can perform the basic maintenance functions of replacing filters. All other operations should be performed by trained service personnel. When working on air-conditioning equipment, observe precautions in the literature, tags and labels attached to the unit, and other safety precautions that may apply.

### INSTALLATION

NOTE: The plugged filter indicator can monitor filter status (CLEAN/DIRTY). Follow the procedures below and perform the steps necessary to install the plugged filter indicator.

#### ⚠ WARNING

Prior to installation of this accessory, make sure all power is disconnected to the unit and locked out. Failure to disconnect power supply prior to servicing may result in serious injury.

#### ⚠ CAUTION

When removing panels from the unit, be careful not to damage the roof or other surfaces with the panels.

### 48/50A Units

1. Open the blower access door on the unit.
2. Open the filter section access door on the unit.

3. Mount the filter switch to the right of the auxiliary control box (see Fig. 1) using two no. 6 screws.
4. Connect control tubes as shown in Fig. 1. Remove plug bottoms, insert grommets and route tube through wall as shown in Fig. 2. See Fig. 3 for dimensions.
5. Make electrical connections:
  - a. Orange wire marked PF-1 to terminal 1 on switch.
  - b. Brown wire marked PF-3 to terminal 3 on switch.

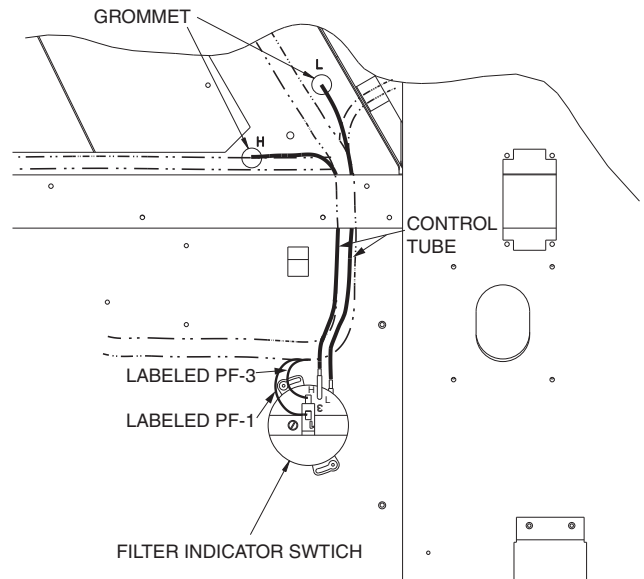


Fig. 1 — Control Tube Routing (48/50A020-060)

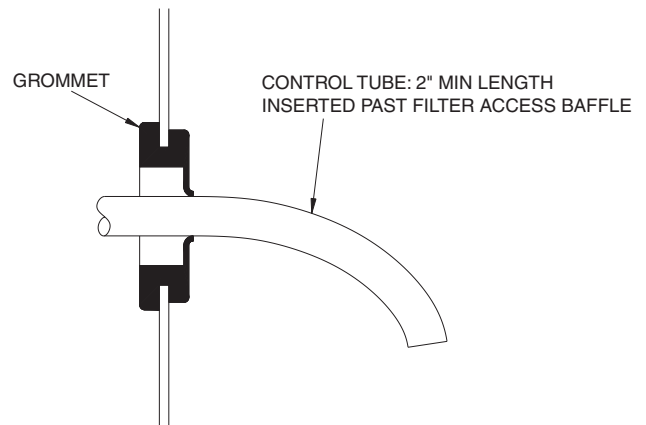
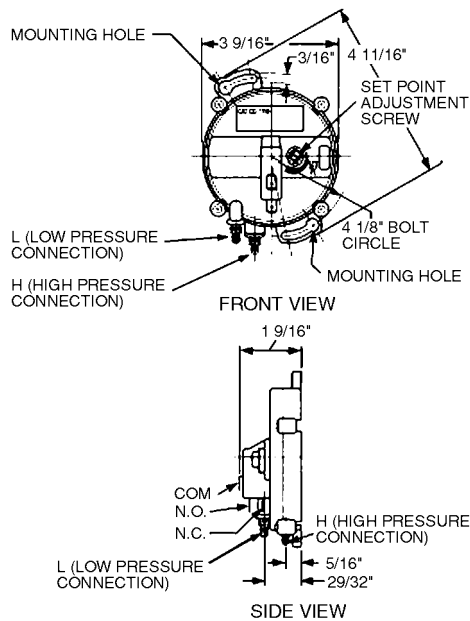


Fig. 2 — Control Tube and Grommet (48/50A020-060)



**Fig. 3 — Indicator Connections and Adjustments**

### 48/50P and 48/50Z Units

1. Open the filter section access doors and panels to gain access. For sizes 030-050, also open the power exhaust section doors and panels and the auxiliary control box cover.
2. Mount one tube bracket (Item 6) on each side of the filter track using the screw (Item 11), as shown in Fig. 4 (size 030-050 unit) and Fig. 5 (48/50P055-100 and 48/50Z055-105 units). Mount grommets into the bracket holes, as shown in Fig. 6.
3. Mount the filter switch in the auxiliary control box, as shown in Fig. 7 (size 030-050 unit) and Fig. 8 (48/50P055-100 and 48/50Z055-105 units), using the screws provided.
4. To install the downstream control tube, push the tube (Item 9) through the grommet, and route the tube around the top of the filter section, as shown in Fig. 4 and Fig. 5.

For sizes 030-050, route the tube down the filter section upright, then along the base rail to the auxiliary control box in the power exhaust section. Gently secure the tube using the wire ties (Item 5), making sure not to pinch the tube. Use the bushing (Item 10), if it is not already installed. Cut excessive length of the tube. Connect the control tube to the switch port labeled “L”. See Fig. 3.

For 48/50P055-100 and 48/50Z055-105 units, route the tube down the filter section upright to the auxiliary control box. Gently secure the tube using the wire ties (Item 5), making sure no to pinch the tube. Cut excessive length of the tube. Connect the control tube to the switch port labeled “L”. See Fig. 3.

5. To install the upstream control tube, push the tube (Item 8) through the grommet, as shown in Fig. 4 and Fig. 5.

For sizes 030-050, route the tube down the filter section upright, then along the base rail to the auxiliary control box in the power exhaust section. Gently secure the tube using the wire ties (Item 5), making sure no to pinch

the tube. Cut excessive length of the tube. Connect the control tube to the switch port labeled “H”. See Fig. 3.

For 48/50P055-100 and 48/50Z055-105 units, route the tube down the filter section upright to the auxiliary control box. Gently secure the tube using the wire ties (Item 5), making sure not to pinch the tube. Cut excessive length of the tube. Connect the control tube to the switch port labeled “H”. See Fig. 3.

6. Attach the control wires to the switch. The filter switch control wires are bundled near the switch location and labeled. Attach one wire to the no. 1 terminal on the switch, and another wire to the no. 3 terminal on the switch.
7. Restore power to the unit.

## CONFIGURATION

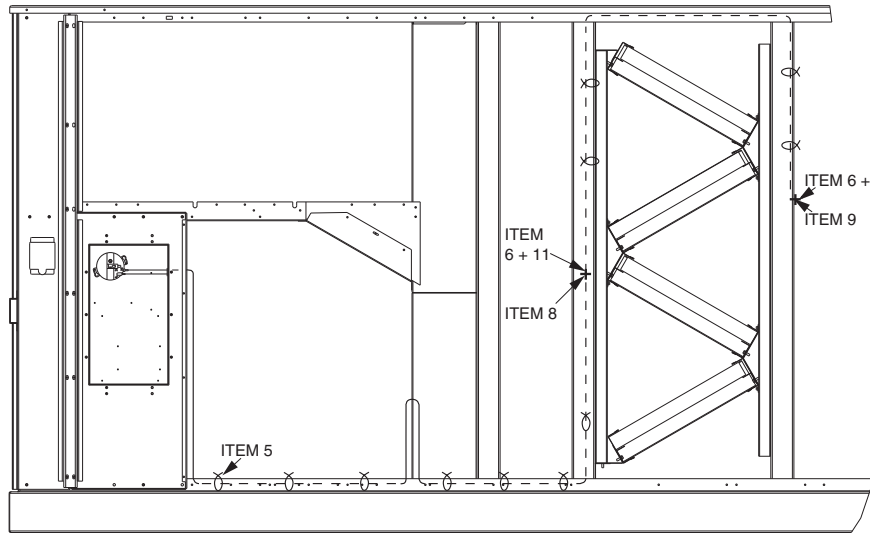
To configure the unit, perform the following procedure. Refer to the Controls and Troubleshooting Guide for more configuration details.

1. The control system must be configured to use the filter switch. A password may be required to edit the configurations, depending on the previous settings configured in the unit. Default password is “1111”.
2. To configure the control use the arrow keys on the scrolling marquee display to scroll the red LED on the display to “CONFIGURATION” position and press **[ENTER]**. Use the arrow keys to scroll up or down until the display shows “UNIT”, and press **[ENTER]**. Use the arrow keys to scroll up or down until the display shows “SENS”, and press **[ENTER]**. Use the arrow keys to scroll up/down until the display shows “FLT.S”, and press **[ENTER]**. Use the arrow key to change the setting to “ENABLE”, and press **[ENTER]**.
3. Press **[ESCAPE]** several times to return to the CONFIGURATION setting. Use arrow keys to scroll up or down until the display shows “SW.LG”, and press **[ENTER]**. Use the arrow keys to scroll up or down until the display shows “FTS.L”, and press **[ENTER]**. Use the arrow key to change the setting to “OPEN” (normally open), and press **[ENTER]**.  
NOTE: Using “CLOSED” (normally closed) is not recommended for this application.

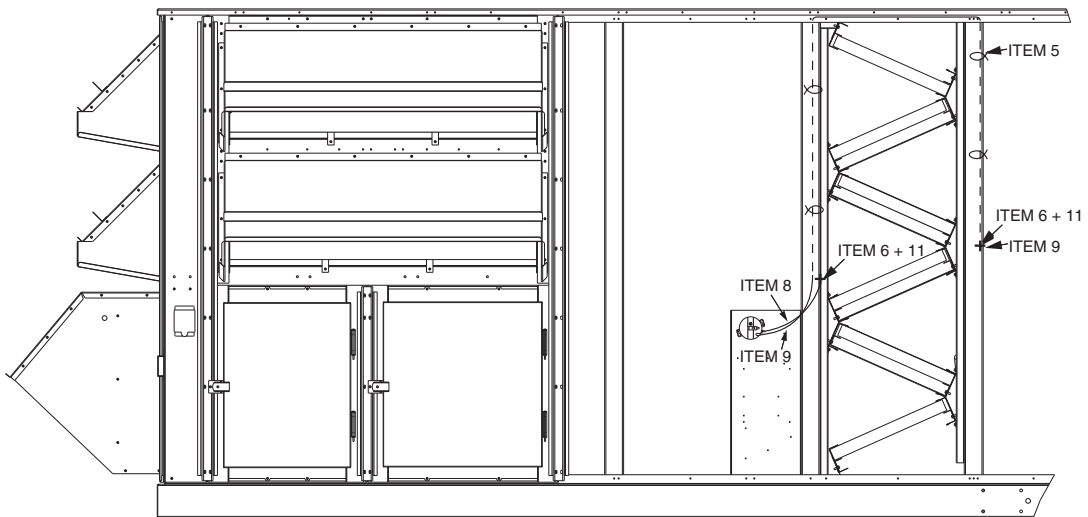
4. Configuration for the filter switch is now complete. Press the **[ESCAPE]** key several times will return the display to the auto scroll setting.
5. Consult the Controls and Troubleshooting Guide for complete instructions on using the *ComfortLink* control system.
6. To configure the filter switch, place the unit in Fan Only mode. The unit return air filters should be clean and new. Using a flat head screwdriver, rotate the adjustment screw until the pressure switch opens. Rotate the adjustment screw in the same direction another 1/4 turn.
7. Close and secure all access doors.

## OPERATION

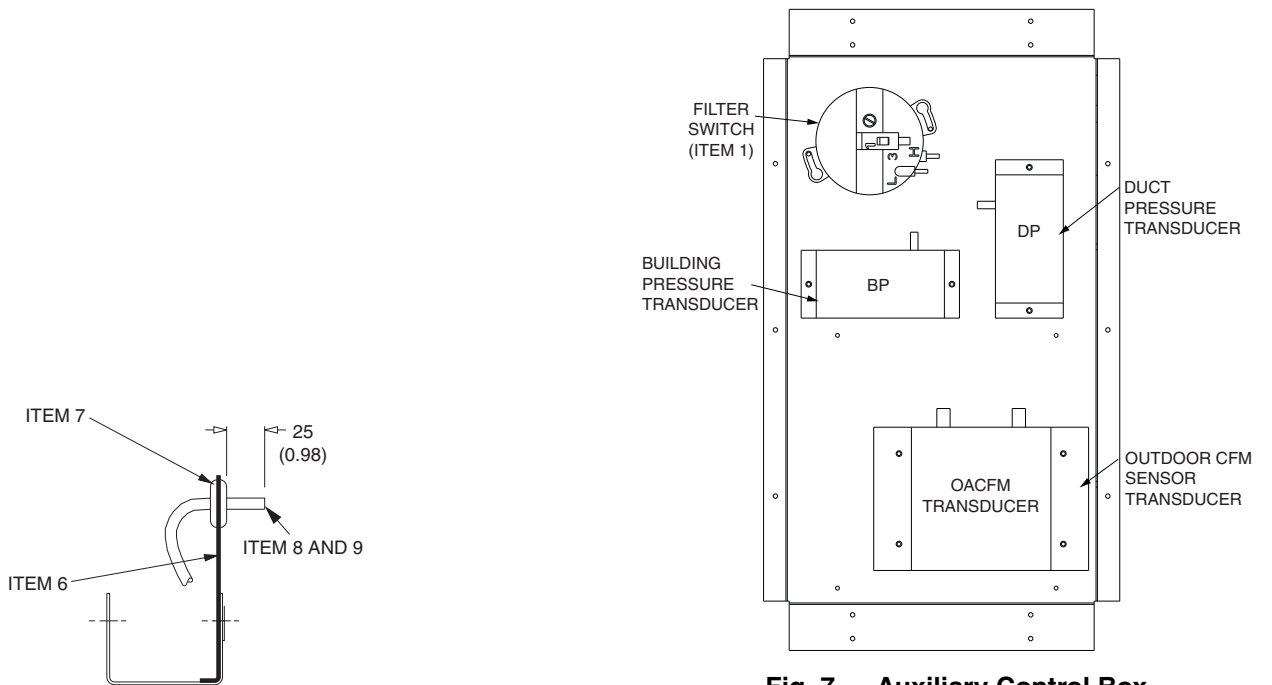
The plugged filter indicator will determine when the filters become dirty depending on the differential pressure across the filters. When the pressure drop exceeds the set point on the switch, an alarm will be generated, indicating a dirty filter. The alarm can be accessed either at the unit display or with a Carrier Comfort Network® device, if installed.



**Fig. 4 — Tube Routing (48/50P030-050 and 48/50Z030-050 Units)**

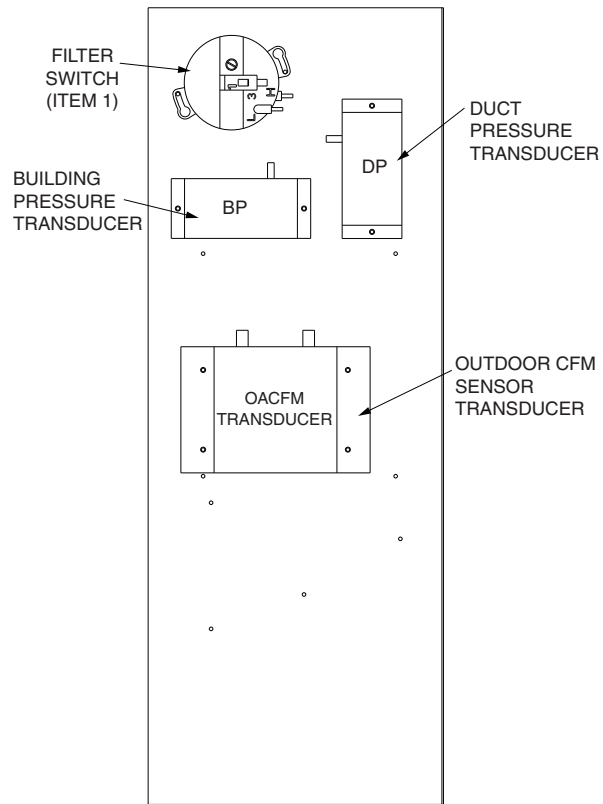


**Fig. 5 — Tube Routing (48/50P055-100 and 48/50Z055-105 Units)**



**Fig. 6 — Tube Bracket**

**Fig. 7 — Auxiliary Control Box (48/50P030-050 and 48/50Z030-050)**



**Fig. 8 — Auxiliary Control Box  
(48/50P055-100 and 48/50Z055-105)**