

SMMSe / SHRMe VRF Indoor Unit MMU-AP0091MH2UL—Compact 4-Way-Cassette

TOSHIBA
Carrier

Submittal Data

Job Data _____ Location _____
 Buyer _____ Buyer PO # _____ Carrier # _____
 Unit Number _____ Model Number _____
 Performance Data Certified By _____ Date _____



SMMSe / SHRMe VRF Compact 4-Way Cassette Features

- R-410A refrigerant
- Five sizes from 7,500 to 18,000 Btu/h
- Standard condensate pump with 24.7 in. lift capacity
- Quiet operation (as low as 31 dBA)
- Independent louver control (fixed or swing)
- Optional wired or wireless controls
- Auto or manually set three fan speeds
- Easy to remove cleanable filter
- Five-year parts limited warranty

INDOOR UNIT MODEL		MMU-AP0091MH2UL
PERFORMANCE		
Cooling Rated Capacity	Btu/h	9,500
Heating Rated Capacity	Btu/h	10,500
Fan Type (Qty)	Turbo (1)	
Airflow (L, M, H)	CFM	220 / 280 / 330
Sound Pressure (L / M / H)	dBA	31 / 35.5 / 40
ELECTRICAL		
Power Supply	V/Ph/Hz	208-230/1/60
Power Consumption (Input)	kW	0.036
Full Load Amps (FLA)	A	0.4
Minimum Circuit Amps (MCA)	A	0.5
Maximum Overcurrent Protection	A	15
MOTOR		
Motor Type	DC Inverter Driven	
Motor Watts	W	60

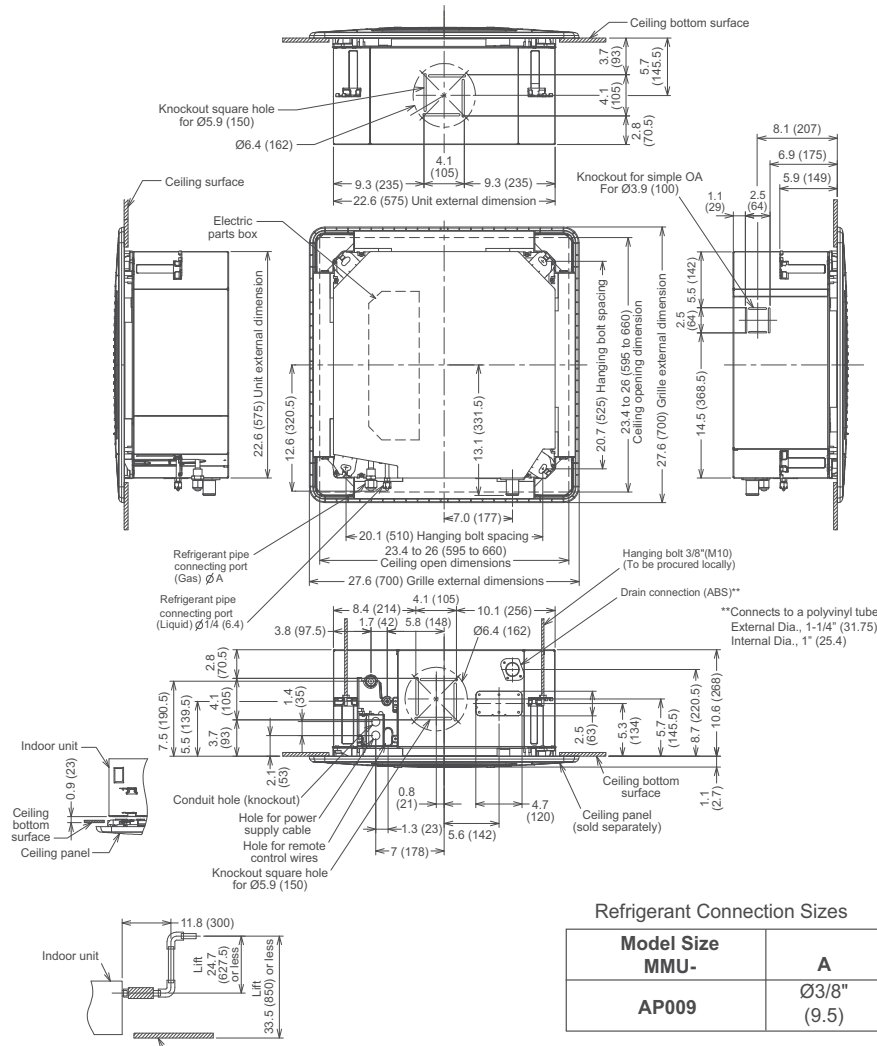
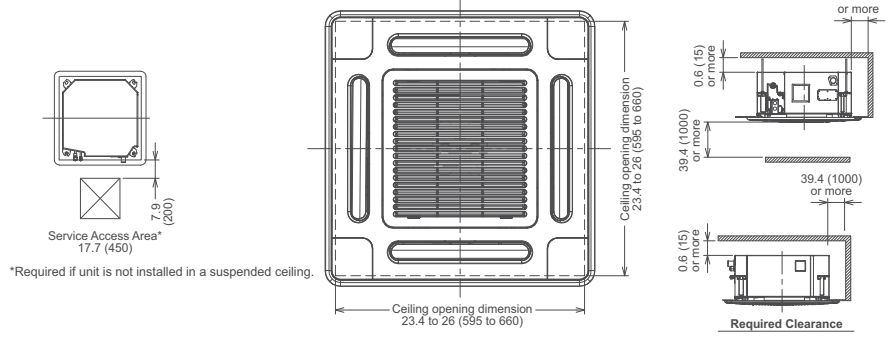
PHYSICAL DATA		
Pipe Connection Size - Liquid (High Pressure)	in.	1/4 (Flare)
Pipe Connection Size - Gas (Low Pressure)	in.	3/8 (Flare)
Pipe Connection Size - Drain (OD)	in.	1-1/4
Pipe Connection Size - Drain (ID)	in.	1
Refrigerant	R-410A	
External Finish	Munsell 2.5GY9.0/0.5	
Unit Width	in.	22-9/16
Unit Height	in.	10-9/16
Unit Depth	in.	22-9/16
Unit Net Weight	lb	35
Panel Width	in.	27-9/16
Panel Height	in.	1-1/8
Panel Depth	in.	27-9/16
Panel Net Weight	lb	7

ACCESSORIES (Optional)

- Wired Remote Controller (7-Day Programmable) - RBC-AMS54E-UL
- Simple Wired Remote Control - RBC-AS41UL
- Stand Alone Receiver with Wireless Remote TCB-AX32UL
- Remote Sensor TCB-TC41LUL
- Wired Remote Controller - RBC-AMT32UL
- Grille Panel RBC-UM11PG(W)-UL

Manufacturer reserves the right to discontinue, or change at any time, specifications or designs without notice and without incurring obligations.

DIMENSIONAL DRAWING INDOOR UNIT COMPACT 4-WAY CASSETTE MMU-AP0091MH2UL



NOTE: The drain connection is ABS. If the drain piping is PVC, the correct glue must be used
Drain Connection

NOTE: All dimensions shown in inches (mm).

