

SMMSe / SHRMe VRF Indoor Unit MMD-AP0304BH2UL-1—Concealed Duct



Submittal Data

Job Data _____ Location _____
 Buyer _____ Buyer PO # _____ Carrier # _____
 Unit Number _____ Model Number _____
 Performance Data Certified By _____ Date _____



SMMSe / SHRMe CONCEALED DUCT FEATURES

- R-410A Refrigerant
- Eleven sizes from 7,500 to 48,000 Btu/h
- Standard condensate pump with 10.7 in. lift capability
- Quiet operation, as low as 27.5 dBA
- Rear return configurable for bottom return
- Auto or manually set three fan speeds
- One-inch track for field-supplied filters
- Five-year parts limited warranty

INDOOR UNIT MODEL		MMD-AP0304BH2UL-1
PERFORMANCE		
Cooling Rated Capacity	Btu/h	30,000
Heating Rated Capacity	Btu/h	34,000
Fan Type (Qty)	Centrifugal (1)	
External Static Pressure (ESP)	in. WG	0.15-0.25 (Factory default) 0.35-0.46
Standard Airflow (H / M / L)	CFM	694 / 555 / 475
Sound Pressure (H / M / L)**	dBA	37 / 35 / 34
ELECTRICAL		
Power Supply	V/Ph/Hz	208-230/1/60
Power Consumption (Input)	kW	0.091
Full Load Amps (FLA)	A	1.4
Minimum Circuit Amps (MCA)	A	1.8
Maximum Overcurrent Protection (MOCP)	A	15.0

MOTOR		
Motor Type	DC Inverter Driven	
Motor Watts	150	
PHYSICAL DATA		
Pipe Connection Size - Liquid	in.	3/8 (Flare)
Pipe Connection Size - Suction	in.	5/8 (Flare)
Pipe Connection Size - Drain (OD)	in.	1-1/4
Pipe Connection Size - Drain (ID)	in.	1
Refrigerant	R-410A	
External Finish	Zinc Hot Dipped Steel Plate	
Unit Width	in.	53-1/4
Unit Height	in.	12-5/8
Unit Depth	in.	31-1/2
Net Weight	lb	119

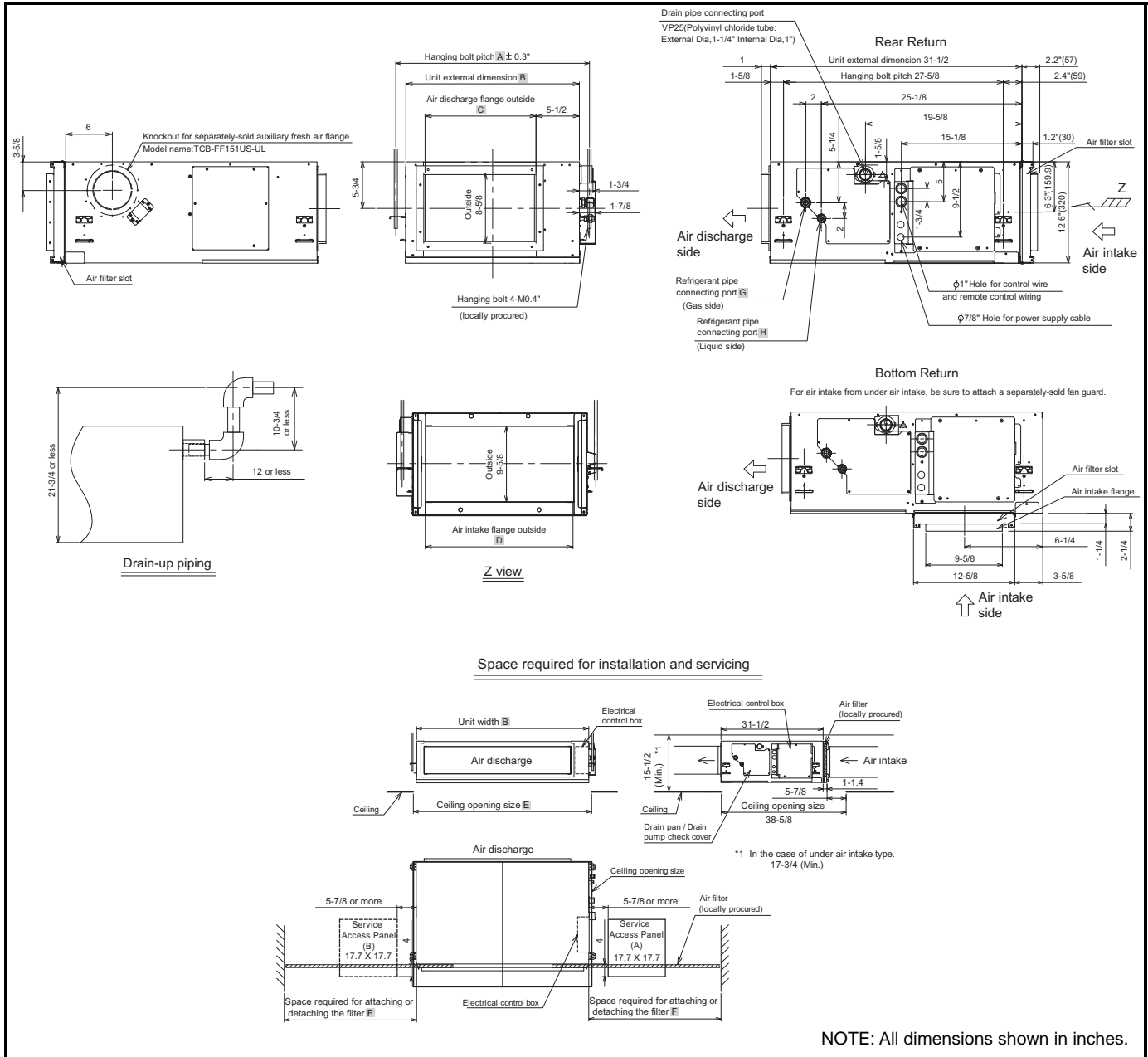
** The actual values in an external operating environment are generally higher than the indicated values due to ambient noise.

ACCESSORIES

- Wired Remote Controller (7-Day Programmable) RBC-AMS54E-UL
- Simple Wired Remote Control RBC-AS41UL
- Stand-Alone Receiver with Wireless Remote TCB-AX32UL
- Remote Sensor TCB-TC41LUL
- Wired Remote Controller - RBC-AMT32UL
- Fan Guard Required with Bottom Return Applications TCB-IG211BUL
- Auxiliary OA Flange TCB-FF151US-UL

Manufacturer reserves the right to discontinue, or change at any time, specifications or designs without notice and without incurring obligations.

DIMENSIONAL DRAWING CONCEALED DUCT MMD-AP0304BH2UL-1



Notes:

- * Provide service access panel (A) for maintaining electrical control box, filter, drain pump, drain pipe, and refrigerant pipe.
- * Replace the filter through service access panel A or B.
(If you pull out the filter in the opposite direction of the electrical control box, service access panel B is required.)
- Space F is required for removing or installing the filter.
- * Field supplied and field installed filter.
- * Provide service access panel for maintaining the fan, fan motor, etc.

Model	A	B	C	D	E	F	G	H	Air filter wide
AP0304BH2UL-1	55-3/4	53-1/4	45-3/8	50-1/8	55-1/8	40-1/2	Ø5/8	Ø3/8	52(20+20+12)

