

# SMMSe / SHRMe VRF Indoor Unit MMD-AP0214BH2UL-1—Concealed Duct



## Submittal Data

Job Data \_\_\_\_\_ Location \_\_\_\_\_  
 Buyer \_\_\_\_\_ Buyer PO # \_\_\_\_\_ Carrier # \_\_\_\_\_  
 Unit Number \_\_\_\_\_ Model Number \_\_\_\_\_  
 Performance Data Certified By \_\_\_\_\_ Date \_\_\_\_\_



### SMMSe / SHRMe CONCEALED DUCT FEATURES

- R-410A Refrigerant
- Eleven sizes from 7,500 to 48,000 Btu/h
- Standard condensate pump with 10.7 in. lift capability
- Quiet operation, as low as 27.5 dBA
- Rear return configurable for bottom return
- Auto or manually set three fan speeds
- One-inch track for field-supplied filters
- Five-year parts limited warranty

|                                       |                 |  |
|---------------------------------------|-----------------|--|
| INDOOR UNIT MODEL                     |                 | MMD-AP0214BH2UL-1                        |
| PERFORMANCE                           |                 |  |
| Cooling Rated Capacity                | Btu/h           | 21,000                                   |
| Heating Rated Capacity                | Btu/h           | 24,000                                   |
| Fan Type (Qty)                        | Centrifugal (1) |  |
| External Static Pressure (ESP)        | in. WG          | 0.15-0.25 (Factory default)<br>0.35-0.46 |
| Standard Airflow (H / M / L)          | CFM             | 694 / 555 / 475                          |
| Sound Pressure (H / M / L)**          | dBA             | 37 / 35 / 34                             |
| ELECTRICAL                            |                 |  |
| Power Supply                          | V/Ph/Hz         | 208-230/1/60                             |
| Power Consumption (Input)             | kW              | 0.091                                    |
| Full Load Amps (FLA)                  | A               | 1.4                                      |
| Minimum Circuit Amps (MCA)            | A               | 1.8                                      |
| Maximum Overcurrent Protection (MOCP) | A               | 15.0                                     |

|                                   |                             |             |
|-----------------------------------|-----------------------------|-------------|
| MOTOR                             |                             |             |
| Motor Type                        | DC Inverter Driven          |             |
| Motor Watts                       | 150                         |             |
| PHYSICAL DATA                     |                             |             |
| Pipe Connection Size - Liquid     | in.                         | 3/8 (Flare) |
| Pipe Connection Size - Suction    | in.                         | 5/8 (Flare) |
| Pipe Connection Size - Drain (OD) | in.                         | 1-1/4       |
| Pipe Connection Size - Drain (ID) | in.                         | 1           |
| Refrigerant                       | R-410A                      |             |
| External Finish                   | Zinc Hot Dipped Steel Plate |             |
| Unit Width                        | in.                         | 53-1/4      |
| Unit Height                       | in.                         | 12-5/8      |
| Unit Depth                        | in.                         | 31-1/2      |
| Net Weight                        | lb                          | 119         |

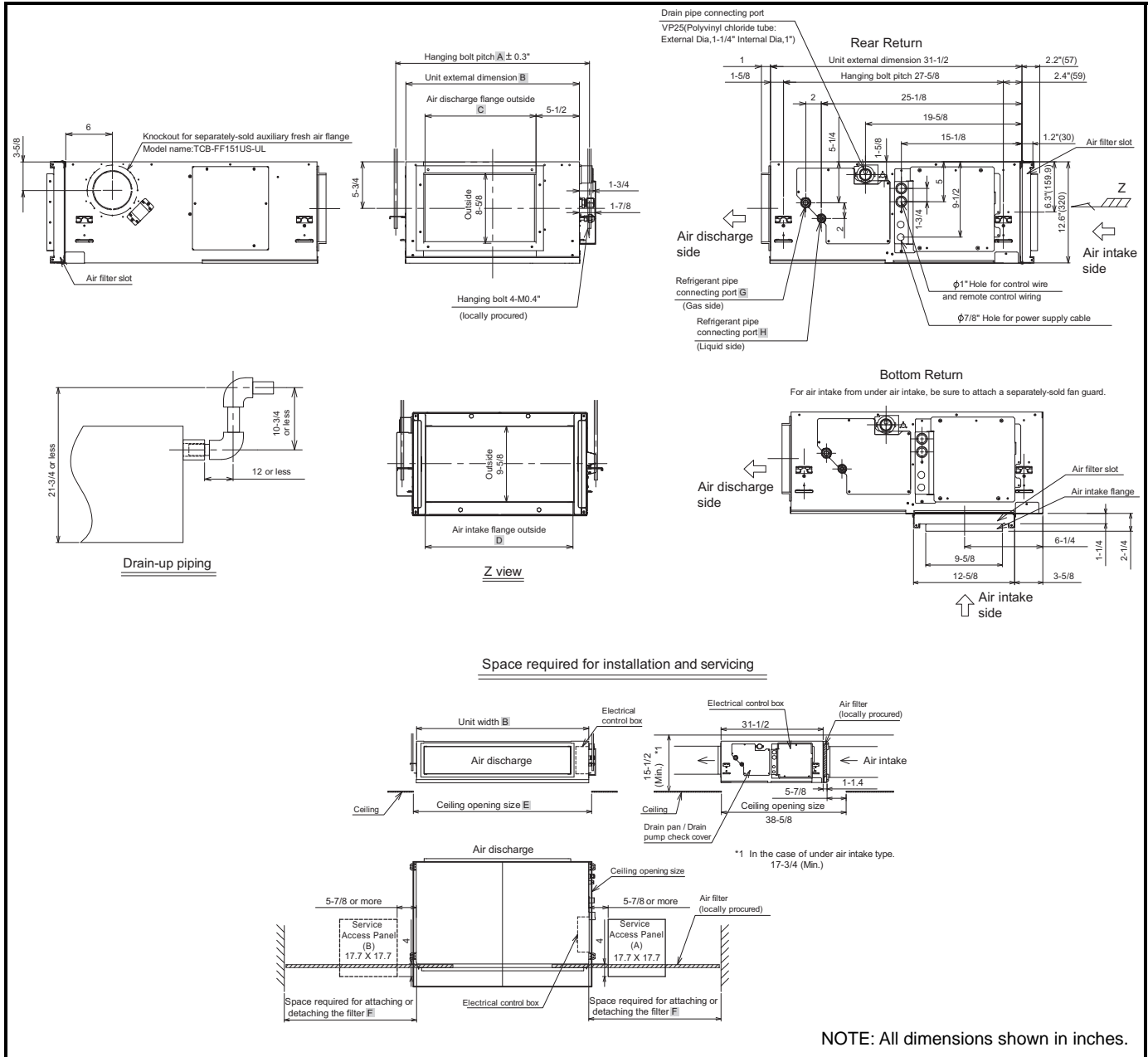
\*\* The actual values in an external operating environment are generally higher than the indicated values due to ambient noise.

### ACCESSORIES

- Wired Remote Controller (7-Day Programmable) RBC-AMS54E-UL
- Simple Wired Remote Control RBC-AS41UL
- Stand-Alone Receiver with Wireless Remote TCB-AX32UL
- Remote Sensor TCB-TC41LUL
- Wired Remote Controller - RBC-AMT32UL
- Fan Guard Required with Bottom Return Applications TCB-IG211BUL
- Auxiliary OA Flange TCB-FF151US-UL

Manufacturer reserves the right to discontinue, or change at any time, specifications or designs without notice and without incurring obligations.

# DIMENSIONAL DRAWING CONCEALED DUCT MMD-AP0214BH2UL-1



**Notes:**

- \* Provide service access panel (A) for maintaining electrical control box, filter, drain pump, drain pipe, and refrigerant pipe.
- \* Replace the filter through service access panel A or B.  
(If you pull out the filter in the opposite direction of the electrical control box, service access panel B is required.)
- Space F is required for removing or installing filter.
- \* Field supplied and field installed filter.
- \* Provide service access panel for maintaining the fan, fan motor, etc.

| Model         | A      | B      | C      | D      | E      | F      | G    | H    | Air filter wide |
|---------------|--------|--------|--------|--------|--------|--------|------|------|-----------------|
| AP0214BH2UL-1 | 55-3/4 | 53-1/4 | 45-3/8 | 50-1/8 | 55-1/8 | 40-1/2 | Ø5/8 | Ø3/8 | 52(20+20+12)    |

