



HOME AUTOMATION  
The heart of a smarter home.

Quick Start Guide for  
steps on how to create  
an automation or scene.

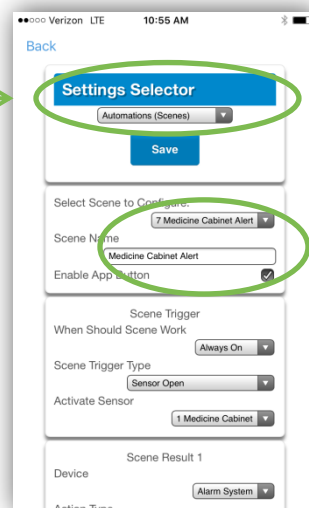


You can automate your system to do many things. This guide will walk you through setting your panel to alarm when a Window / Door sensor is opened.

## CABINET DOOR OPENING TRIGGERS PANEL SIREN TO ALARM

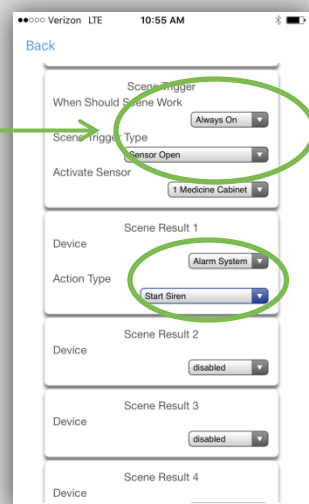
### STEP 1

After logging into the site, select *Settings* from the hamburger menu on the top left. Select *Automation (Scenes)* from the drop down menu in the *Settings Selector* menu.



### STEP 2

Select the next available scene, "X Scene" and name your automaton. Be sure to select a name that is intuitive.



### STEP 3

Select *Always On* and decide what triggers the action (i.e. the cabinet door opens = sensor open). Next, select which sensor (in this case, medicine cabinet door).

### STEP 4

In Scene Result 1, select *Alarm System* from the drop down menu. Next, select *Start Siren* in the Action Type drop down menu. Click Save and your automation is now created.

*Note: Using the panel siren as an alert, requires entering your pin on the panel or your app to turn off the siren, using an add-on Z-Wave siren allows you set the a timer on the alarm. See the Door / Window sensor and Z Wave device QSG for more information.*